

QUOTE

"There is no love sincerer than the love of food."  
—George Bernard Shaw.

ONE HUNDRED-THIRTEENTH YEAR—No. 3

# The Chelsea Standard

CHELSEA, MICHIGAN, TUESDAY, JUNE 22, 1982

25¢  
per copy

16 Pages This Week



**SHE'S SAFE:** Lisa Beeman heads across home plate to push Chelsea's lead to 3-1 in the fifth inning Wednesday during semi-final state softball action against Richmond. Chelsea went on to win 4-3 and contend with West Branch Ogemaw Heights Monday in Lansing.



**THE THRILL OF VICTORY, ETC.:** Battery mates Shelly Weber and Amy Unterbrink embrace following Wednesday's 4-3 win over Richmond in state semi-final softball action. Winning pitcher Unterbrink was also the key to the win following her ground rule double in the eighth inning that sent Cathy Doll home from second base.

## Girls Softball Team Wins State Class B Championship Title

A long, winning season came to a triumphant close Monday afternoon as Chelsea's lady Bulldogs softball team came back from a two-run deficit in the bottom of the seventh inning to defeat West Branch Ogemaw Heights, 3-2, and earn the 1982 State Class B Softball Championship.

The winning run was scored in the bottom of the 13th inning as Maggie Sweet led off with a ground out to short. Lisa Beeman got a base hit up the middle to center and Celeste Powell got the second out on a pop up to the pitcher.

Amy Hume was next to bat and hit a line drive single to deep left center. The left fielder committed an error allowing Lisa Beeman to score from first base.

Earning yet another win, Amy Unterbrink allowed just four hits, struck out 14 and walked four. She retired 24 of the last 25 batters she faced.

Chelsea remained down by two in the bottom of the seventh as Shelly Weber and Cathy Doll got base hits. Amy Unterbrink got an intentional walk and Weber scored on a fly ball by Kim Forner. Doll scored as Laurie

Cobb pounded a base hit to send the Bulldogs and their opponents into extra innings and Chelsea's eventual win.

Following the interruption of Chelsea's softball game against Richmond Tuesday because of lightning, torrents of rain and a tornado spotted in Grass Lake, the Bulldogs and Blue Devils took to the Chelsea field again Wednesday to take up their state semi-final contest in the bottom of the fourth inning. On an extra-inning double by winning pitcher Amy Unterbrink, Cathy Doll scored in the eighth inning to send the Bulldogs to the state finals by winning the delayed game, 4-3.

At the postponement of Tuesday's game, the 31-2 Bulldogs and the 28-6 Blue Devils were tied 1-1 on unearned runs, with the teams scoring without hitting the ball out of the infield. Chelsea had two hits to Richmond's one hit while each team had committed one error.

On the mound, Amy Unterbrink set down 12 of 13, and struck out five Richmond batters while Richmond pitcher, Mari Foster, struck out three Chelsea players.

On Wednesday, Chelsea and the opposition headed onto the field to resume play as center-fielder Maggie Sweet reached base on an error, stole second, got to third on a passed ball and scored on Lisa Beeman's bunt single. Beeman then advanced to third and stole home when Celeste Powell walked and headed to second to draw a throw. The Bulldogs moved ahead, 3-1.

Richmond tied the game in the sixth inning, before Amy Unterbrink could work out of a bases loaded, one-out situation. Then, in the eighth inning, Cathy Doll hit a clean single, followed by Unterbrink's long drive over the head of a Richmond center-fielder. Following a bounce, the ball headed over the fence, bringing about a ground rule double as Doll came home with the winning run and the Bulldogs moved into the Class B state championships to be played Saturday at Ranney Field in Lansing.

Despite the excitement surrounding Saturday's championship game, like Tuesday, heavy rains postponed the "chance of a lifetime" until Monday afternoon.

## July 4th Fireworks Planned

Chelsea's Fourth of July celebration will follow its annual course, featuring a chicken barbecue, four wheel truck pull, ice cream social and fireworks display. This year's events will be held at the Chelsea Fairgrounds, located at the intersection of Old US-42 and Old Manchester Rd.

The Independence Day action will get underway at 11 a.m. with the four wheel truck pull in the Chelsea Fairgrounds arena. There will be available seating for 3,000 and a charge of \$2 per spectator.

(Continued on page two)

## Tornado Warnings Sounded

Following Tuesday's bout with hazardous weather and the citing of eight unconfirmed tornadoes in the immediate vicinity, Chelsea's warning sirens, signalling threatening weather have become a topic of interest.

According to Civil Defense director Robert Schantz, a tornado warning is signalled by three, one-minute blasts of the fire whistle, coming at 10 second intervals. The tornado warning indicates that a tornado has been reported in the area and that residents should take cover immediately.

The all-clear signal, indicating that the threatening weather has moved on or subsided, is made up of four short blasts of the fire whistle.

## Heritage Day Set In Grass Lake

Grass Lake will take on a 19th century atmosphere briefly at the end of the month.

The occasion will be Heritage Day, sponsored by the Grass Lake Area Historical Society from 10 a.m. to 3 p.m. Saturday, June 26. Activities will be centered at the Coe House Museum, the restored Victorian residence at 371 W. Michigan Ave.

Chairman of the event is Sam Knecht, president of the Society's Board of Trustees. The event involves demonstrations of arts and crafts of by-gone days, a flea market, tours of the museum and sale of refreshments.

Featured will be the Fireside Spinners and Weavers, a local guild sharing headquarters in the Coe House. "The Fireside group will be showing the process of spinning wool and weaving it into fabric, starting with the primary source—the sheep," Knecht says. "We are further pleased to welcome back some of the most outstanding practitioners of old

## Two Millage Requests Approved By Voters in Annual School Election

In Monday's Chelsea School District election, local voters convincingly passed the 20.5-mill operational renewal with a vote of 1,084 to 397, with six invalid ballots. The .5-mill maintenance increase also received voter support with the local electorate approving it, 906 to 574. Ten ballots were spoiled in the second proposal.

The Washtenaw Intermediate School District .5-mill special education proposition was defeated by 70 votes with 775 approving the increase and 705 rejecting it. Five ballots were made invalid.

In the race for positions on the school board, incumbents Dale Schumann and Daniel Snyder won easily over their opponent, James Patterson and Raymond Coulter. Schumann received 1,090 votes while Snyder got 859. Defeated candidates Patterson and Coulter received 388 and 255 votes, respectively.

Dexter voters approved their 19-mill levy, including the one-mill increase, with votes tallying 801-664. In addition, the .5-mill maintenance levy was approved, 841 to 644. Village residents turned down the .5-mill Washtenaw Intermediate School District pro-

posal, 770-659 and, in the school board race, incumbent Beverly Ross secured another term with 882 votes, while newcomer Kathleen Kopchick picked up 436 votes.

In Manchester, the \$1.4 million bond issue, defeated one time before, was again turned down by a vote of 526 to 492. It will be an issue, for the third time, at a later election. The WISD proposition was flatly rejected, 638 to 386 while Jo Ann King Okey was elected to a one-year school board term with 638 votes while loser Thomas G. Golding received 328 votes. Running unopposed for four-year school board terms, Kent P. Talcott and Earl Horning received 634 and 605 votes, respectively.

In Pinckney, voters passed one of two identical 2-mill proposals by a vote of 1,197 to 1,184; the second proposal was defeated, 1,322 to 1,008. Newcomer Ann J. Britton took incumbent Robert Samways' school board seat, earning 1,217 votes to Samways' 827. Elected to one-year terms were Judith Mehler and Charles Lindsay, collecting 1,303 and 879 votes, respectively. Losers James Katakowski and Barrie White got 595 and 521 votes, respectively.

Whitmore Lake suffered key losses Monday as voters turned down a 1.8-mill operational increase levy, 547 to 406. Of that proposition, .8-mill would have been used for maintenance of athletics which were subsidized

by public contributions last year. Voters also turned down the WISD proposal with a resounding 619 no votes to 329 yes votes. Winners in the school board race were Clifford Behrens with 391 votes and James Grezlak with a total of 413, each earning four-year terms on the Whitmore Lake Board of Education. Losers were Mary Devlin with 297 votes, Joann Blake with 84, Harold Ely with 262 and Sandra Malish with 297.

Despite the WISD special education request's failure in area school districts, the .5-mill increase passed in the county over-all, with 12,664 voters approving the proposal and 9,484 turning it down. Key to this victory appeared to stem from Ann Arbor electors, voting in favor of the increase, 6,926 to 3,410.

## Peter Flintoft Named To Head Bar Association

Peter C. Flintoft, Chelsea attorney, has been elected to serve as president of the Washtenaw County Bar Association for the period of July 1 through June 30 of next year. Others elected to hold office include Robert L. Henry, Jr., vice-president; Sandra A. Hazlett, secretary; and Dana A. Dever, treasurer, all of Ann Arbor.

## Hospital Elects New Medical Staff Officers

Janet Baum, M.D., has been elected chief of the medical staff at Chelsea Community Hospital. Dr. Baum is director of radiology at Chelsea Community Hospital and is a clinical assistant professor at both University of Michigan and Michigan State University.

Dr. Baum succeeds Leonard Wolin, M.D., who served as chief of staff for the past three years.

Also elected are Reuel Long, M.D., vice-chief of staff; Jennifer Frank, M.D., secretary-treasurer; Marguerite Shearer, M.D., member-at-large to the Professional Relations Committee; David Winston, M.D., chief of medicine; James Peggs, M.D., vice-chief of medicine; Kenneth Wilhelm, M.D., chief of surgery; and Bruce Stubbs, M.D., vice-chief of surgery.



JANET BAUM, M.D.

## Civic Foundation Has 79 Founding Members

The New Civic Foundation of Chelsea has 79 founding members to date. They are: Gerald Ashby, Philip Barels, Norman Bauer, Gen. Dwight Beach, William Bott, Edwin Brown, Mary Brown, Kathy Brubaker, Charles Cameron, Ruth Cameron, Marilyn Chas- tean, Donald Cole, Arthur Dills, Ruth Dills, Robert Daniels, Mar-jorie Daniels, Vincent Dorer, John Dunn, Thomas Elsie, Ann E. Feeney, Robert Foster, Paul Frislinger, Thomas Green, Walter Hamilton, Peggy Hamilton, William Hawks, M.D., Lloyd Heydlauff, Dudley Holmes, Dudley Holmes, Jr., Arlene Howe, Stephen Janick, Willard Johnson, Robert Kendall, John Keusch, Costas Kleanthous, M.D., Sylvia Kleanthous, George Knickerbocker, Richard Kolander, Eugene LaFave, Patricia LaFave, Helen Lan- caster, Barbara Lauson, Edward Lawe, David Longworth, Paul

Mann, Jack Merkel, Robert Merkel, John Mitchell, Rev. John Morris, Randy Musbach, Anton Nielsen, William Nilan, Mary Nuffer, William Nuffer, Ronald Olmsted, George Palmer, Kay Poljan, Walt Prater, William Rademacher, Marlene Rademacher, Herman Radloff, Charles Ritter, Jaclynn Rogers, Kenneth Runciman, Frances Runciman, Paul Schaible, Shirley Schaible, William Spade, Margaret Spade, Joyce Spencer, Sheridan Springer, Arthur Steinaway, David Strieter, Ray Van Meer, Clare Warren, D.D.S., Bernard Wolf, Jane Wolf, Joan Wolf, Steven Yarows, M.D.

As soon as the Founding Membership Drive is complete, founding members, who contribute \$50, will elect the officers and Board of Trustees of the Foundation and will participate in the formation of the Founda-

(Continued on page two)

## Township Candidates File for Office

Wednesday, June 9 was the filing deadline for some area township officials seeking election. Among those townships affected by last week's deadline were Dexter township, Lyndon township and Manchester township.

Persons filing petitions for election as trustees in Dexter township included Republicans James L. Drolett of Pinckney, Richard J. Rigg of Chelsea, Peter L. Holske of Chelsea, H. Douglas Smith of Pinckney and Democrat John D. Scriven of Chelsea. Two two-year trustee positions are to be filled.

In Lyndon township two Republicans will seek a single, two-year trustee position. They are M. Jean Dunn and George Beeman, both of Chelsea.

In Manchester township, two candidates filed petitions to fill two vacant library board seats.

(Continued on page two)



Established 1871 **The Chelsea Standard** Telephone (313) 475-1371  
Walter P. and Helen May Leonard, Publishers  
USPS No. 101-720

Published every Tuesday at 300 N. Main Street, Chelsea Mich. 48118, and second class postage paid at Chelsea, Mich. under the Act of March 3, 1879. Postmaster: Send address changes to The Chelsea Standard, 300 N. Main St., Chelsea, Mich. 48118.

Subscription Rates (Payable in Advance)  
In Michigan: One year in advance .....\$8.00  
Six months .....\$4.50  
Single copies mailed .....\$ .50  
Outside Michigan: One year in advance .....\$10.50  
Six months .....\$6.00  
Single copies mailed .....\$ .75

MEMBER **NATIONAL NEWSPAPER ASSOCIATION** - Founded 1908  
National Advertising Representative: MICHIGAN NEWSPAPERS, INC.  
827 N. Washington Ave.  
Lansing, Mich. 48906

**JUST REMINISCING**  
Items taken from the files of The Chelsea Standard

### 4 Years Ago . . .

Thursday, June 23, 1978—

Chelsea Fairgrounds promises to be the area's hot spot Tuesday, July 4 as members of the Herbert J. McKune Post No. 31 America Legion turn their talents to the roasting of chickens, the serving of ice cream and the lighting of fireworks.

Chelsea Area Jaycees, in conjunction with the American Legion-sponsored July 4 festivities, will sponsor a garden tractor pulling contest beginning at 9 a.m.

The Rev. R. J. Ratzlaff, pastor of St. Paul United Church of Christ, was recently elected to the Washtenaw County Community Service Board.

Knowing a good thing when they see it, the Village of Chelsea and the Chelsea School District applied for a second year of funding for the Department of Natural Resources WORC (Work Opportunity Resources Corporation) project and received \$32,557 to be used to pay the crew of 33 local youths taking part in the learning and maintenance program.

### 14 Years Ago . . .

Thursday, June 27, 1968—

And the rains came. Cars slipped and slid home on the expressways, roads and basements were flooded and so on as a deluge of rain fell on the area this week. A total of 3.4 inches of rain pelted the area, now in the process of cleaning up.

Richard Schenk moved into Chelsea Friday, June 21, after and 30-year absence with a big smile on his face.

Lloyd C. Hafner, Troop 476's newest Eagle Scout, was honored at an Eagle Court of Honor at the Chelsea Methodist church this past week.

Lima Township Supervisor, Jay Bradbury, announced that he will seek the Republican nomination for county commissioner in the new first district, including Lyndon, Sylvan, Lima, Sharon, Freedom, Manchester and Bridgewater townships.

The Village of Chelsea's sewage treatment plant has earned the Dow Chemical Award of Merit for having no lost time injuries in 1967.

### 24 Years Ago . . .

Thursday, June 25, 1958—

Because of the opposition of residents of the Cavanaugh Lake and Cavanaugh Lake Rd. areas to the proposed location of a

village dump site on the Ousley farm, off Cavanaugh Lake Rd., the Village Council's committee in charge of the project has withdrawn its petition and is seeking another location.

A resolution passed at a special meeting of the Village Council Thursday evening sets Aug. 5 as the date for a special election on a proposal for a home rule city form of government for Chelsea.

Fishing on the lakes in this area was "good" on the opening day of the fishing season, Saturday, June 21.

During the hours of darkness of Thursday, June 26, equipment and files of the License Bureau will be moved from the County Jail to Room 15 of the basement of the County Building. The License Bureau will begin functioning at its new location at 9 a.m. Friday, June 27.

At an Indianapolis Rose Society show at Brookside Park, Indianapolis, Mrs. Paul Reichert, a member of the society, won six firsts, three second and three third place ribbons on roses she entered. She is a former resident of Chelsea, now living in Tipton, Ind.

### 34 Years Ago . . .

Thursday, June 24, 1948—

Forty-two were present at the annual Lehman family reunion held Sunday, June 20, at the Gleasons Hall in Waterloo. A short business meeting was held followed by much reminiscing and a pot-luck dinner.

Helen Baxter and Leora Noll took the parts of Mary and Matron, the former being the first lecturer and the latter, second lecturer at Olive Chapter No. 108, OES initiation ceremonies Wednesday.

Chelsea's Sylvan Theater will present the feature film "Dark Passage" Sunday and Monday, a movie starring Humphrey Bogart and Lauren Bacall.

Air-Hydraulics, Inc., located on W. Middle St., is an outgrowth of a company formed during World War II and is planning expansion in the future. The company moved to Chelsea in 1945.

### Dexter-Ann Arbor Rd. Resurfacing Project Approved

Michigan Department of Transportation has announced that Dexter-Ann Arbor Rd., between Zeeb Rd. and Dexter's eastern limits, will be under construction, beginning within a month. The rebuilding project has been awarded to low bidder Midwest Stabilization, Inc., of Madison Heights with a bid of \$226,051.

Estimated costs were \$330,148 for the road rebuilding which will mean resurfacing and widening to 24 feet for 2.6 miles. October is the deadline for completion. Costs are being shared by MDOT and Washtenaw County Road Commission.

**WEATHER**  
For the Record . . .

	Max.	Min.	Precip.
Tuesday, June 15	84	59	0.30
Wednesday, June 16	87	54	Trace
Thursday, June 17	71	51	0.00
Friday, June 18	74	58	0.21
Saturday, June 19	86	61	0.38
Sunday, June 20	71	50	0.42
Monday, June 21	87	53	Trace

**WAYNE Duck & Goose Feeds**

**McCALLA FEED SERVICE**  
12875 Old US-12, Chelsea  
Ph. 475-8153

**Ducks - Geese - Turkeys**  
**Broiler Chicks - Layer Chicks**  
**Fancy Chicks**

**Equipment and Bedding**

**WAYNE Broiler Feeds** **ORDER NOW** **WAYNE Pullet Grower Starter Feeds**

## ★ MICHIGAN MIRROR ★

By Warren M. Hoyt, Secretary, Michigan Press Association

### Fresh Water May Lead To Economic Recovery

American and Canadian officials are relying on fresh water as their "ace in the hole" to bring the region back to the economic strength it once enjoyed.

However, they were told by a law professor they could be powerless under current legal structures to halt diversion of water out of the area.

Wayne State University Professor Robert H. Abrams told officials attending a two-day conference on Mackinac Island that an interstate compact, agreed to by each of the eight states bordering the lakes and ratified by Congress, would go a long way toward preventing diversion.

But he said cases that are before the U.S. Supreme Court would probably result in rulings that a state ban on exporting water is unconstitutional.

Diversion of Great Lakes waters to the Southwest, a battle Lieutenant Governor James H. Brickley describes as pitting the water belt against the parch belt, was foremost in the minds of most officials.

In a region already reeling from an economic slump, many expressed fears that, with diversion goes economic recovery.

"If we allow water to be diverted, assuming we have the authority to do so, we are watch-

ing the loss of jobs," Abrams said.

He added diversion of large amounts of water across distances as far as the Southwest would not generally be feasible without government subsidies.

So despite such estimated costs of \$30 billion to move 10,000 cubic feet of water per second from Lake Superior to the Missouri River, Abrams said continued pressures would be felt from interest groups seeking to move water supplies away from the Midwest.

Such a diversion under a U.S. Army Corps of Engineers proposal would lower the lake level less than one inch and would take 10 power plants, each costing \$1 billion, to move the water.

Abrams suggested an interstate compact which would limit water use only within the states in the Great Lakes basin would be the best way to begin protective action.

As part of the compact, he said, the existing Great Lakes Commission could get expanded authority to make decisions for the collective interest of the states on the use of the water.

He further said it would probably take amendments to the U.S./Canadian Boundary Waters Treaty to include the provinces in the compact.

## Uncle Lew from Lima Says:

DEAR MISTER EDITOR:

None of the fellers at the country store Saturday night had ever heard of Superior Court Judge Edward Butler before the session started, but he got their full vote of support before it ended. Ed Doolittle come with this report of the judge's action in his San Diego court that deserves a nation-wide round of applause and probable will bring all the civil liberty lobbies down on his head.

This feller in Butler's court had sued 50 people in the past two year. The judge said enough is enough, and ordered him to put up a \$5,000 bond for ever defendant named in any more lawsuits. Courts are open to everybody with serious complaints, the judge said, but they are not there just for people to aggravate other people. Ed said you got to wonder about anybody that has fell out with 50 people in two year so serious the trouble couldn't be settled outside of court.

Fer that matter, broke in Clem Webster, you got to wonder about what the court in Atlanta is going to do about Willie Sellers. Willie has sued the Internal Revenue Service for some of his bank loot back, Clem said. It seems a IRS agent told Willie he had to pay income tax on \$75,000 he got in a bank robbery and a apartment burglary the same year. Willie learned he was tricked, and he wants his tax back. The way Willie figgers, he earned the money with the 65 year sentence he's serving. The IRS looks at the tax Willie paid on the bank's and apartment's money as a gift, Clem said, and he would like to hear what Judge Butler would say to the lawyer that took Willie's case.

Bug Hookum said he was wondering what happened when that feller charged with shooting out 1,000 car windows with a pellet gun dome to court in New York City. After all, Bug said, he was using the free enterprise system to build his business. The feller was part owner of a company that replaces car glass, so the more he broke the more he fixed. The police said his shop was operating ever day of the week trying to keep up with him and his pellet gun. With this feller's ideas about drumming up trade, Bug allowed, it's a good thing fer New York he ain't a undertaker.

General speaking, Mister Editor, there's a new twist ever way you turn. This clipping Ed

had at the session told where a outfit called the Consumer Product Safety Commission has come out with a list of 183 ways Americans hurt themselves. What it boils down to is if you want to play it safe you can't work or play, or stay in bed or get out of bed. Actual, if your bed is upstairs your safest move is to jump out the window, which didn't even make the list. The No. 1 way we get hurt, the Government survey shows, is on stairs, steps and ramps. Bicycles is the next leading cause of injury, so riding a bike down a ramp is pure suicide. When the director of statics for the commission was ask how did dancing make No. 72, he said they did reserch in some wild discotecks.

Fer my money, the public didn't git took no worse by the feller with the pellet gun than by the how-we-git hurt reserchers. Yours truly, Uncle Lew.

## Taylor Man Drowns in Huron River

Washtenaw County Sheriff's Department reports that a 25-year-old Taylor man drowned in the Huron River Saturday, June 12. Pronounced dead on arrival at University Hospital was Kyle Matthews.

According to reports, Matthews and a companion were traveling down the Huron River at Hudson Mills Metro Park while his wife and two others were in a separate canoe. At the fork in the river, Matthews and his companion headed in one direction while his wife, Brenda Sue, and the others traveled the other path and got stuck. Matthews' canoe was beached and he and his friend made a successful attempt to free his wife's canoe. After assisting them, Matthews swam upstream to the location of his canoe, on the east shore approximately 60 yards south of North Territorial Rd. in Dexter township, while his friend walked along shore. Reportedly a strong swimmer, Matthews could not overcome the strong currents and whirlpool and his drowning was attributed to fatigue.

According to authorities, the accident occurred at approximately 1 p.m. and though his companion attempted to assist him, the river currents were too strong.

## Civic Foundation Report

(Continued from page one)

tion and the determination of its objectives and goals.

The Foundation will raise funds in order to finance community projects and programs which are not fundable from existing sources. It is a non-profit organization and contributions are tax deductible.

The Founding Membership Drive for the Foundation will continue for several weeks.

Interested persons should con-

tact Art Dils at 994-3904 or Ron Olmstead at 475-1311, Ext. 392. They may also send membership contributions to the Civic Foundation of Chelsea, Post Office Box 45, Chelsea 48118.

## Township Candidates

(Continued from page one)

Democrats Ann S. Fowler and Kenneth B. Arney will run for the pair of seats, holding terms that will expire in November 1984.

**END THE MUD PROBLEM and Get Ready for Summer!**

**HAVE A NEW ASPHALT DRIVEWAY**

**FREE ESTIMATES** **PHONE 475-7631**

**KLINK EXCAVATING**

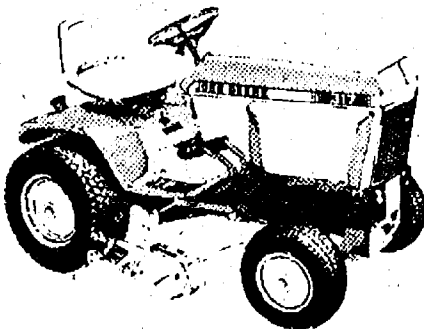
## FRANK GROHS CHEVROLET IN DEXTER

Would be pleased to take care of all your service, body shop needs, including Chevrolet warranty work on your present Chevy.

**Give ROLLY SPAULDING or CHARLIE FREDETTE**  
a call at 426-4677  
"Get the Best for Less"

### 14- and 17-hp Tractors

Two hydrostatic drive models — the 14-hp 314 and the twin-cylinder, 17-hp 317. Hydraulic lift. Built-in headlights. Color-coded controls. Variety of implements available.



**Nothing Runs Like a Deere**

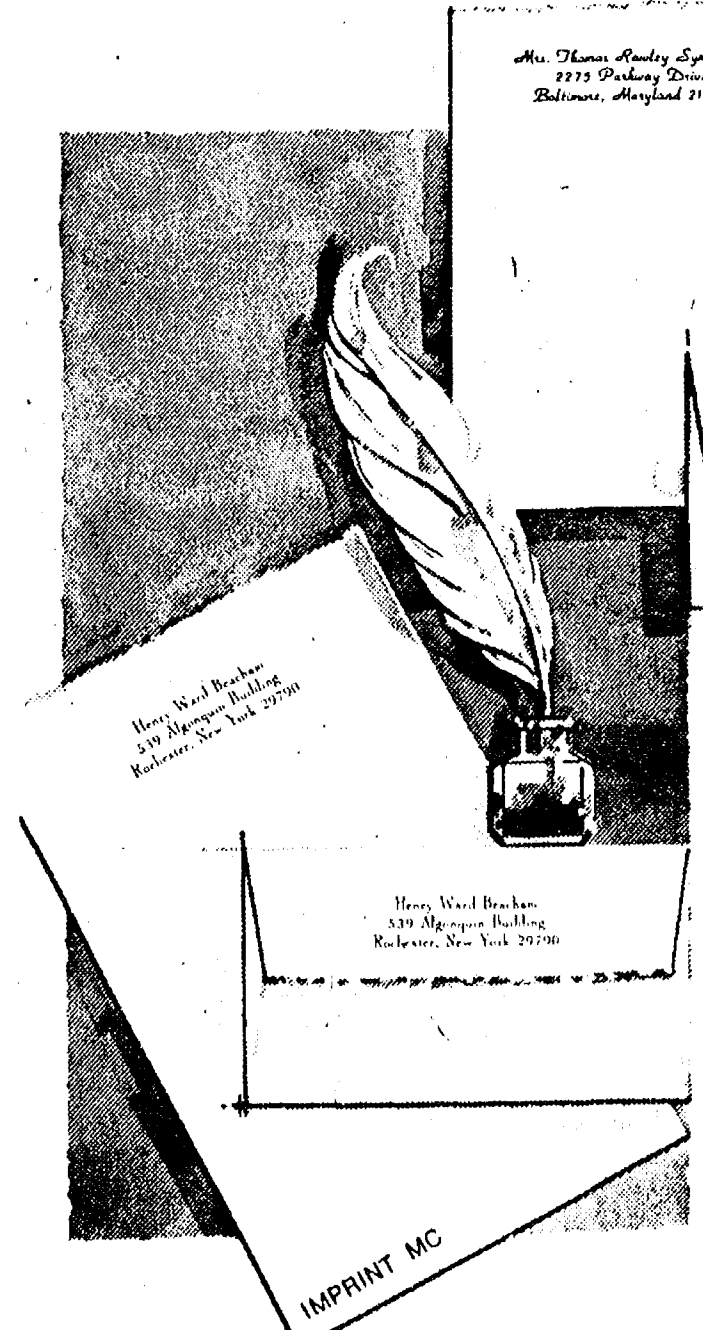
## HURON FARM SUPPLY

Phone 426-8847

8250 Dexter-Chelsea Rd.

Dexter, Mich.

## The Chelsea Standard



**June Sale**  
**Save 44%**  
**Rytex**  
**Deckle-Edge**  
**Vellum**  
**Personalized**  
**Stationery**  
**8.95**  
regularly \$16

**THE CHELSEA STANDARD**  
300 N. Main St., Chelsea, Mich. 48118

Please send \_\_\_\_\_ Boxes DECKLE EDGE VELLUM on sale @ \$8.95 each.  
Include Bonus: ☐ (check) 50 extra, plain sheets at \$3.00 each box

Imprint Name \_\_\_\_\_  
Address \_\_\_\_\_  
City/State/Zip \_\_\_\_\_

Check choice of: paper size & color, imprint style and ink color

Princess Size: ☐ White (9401) ☐ Blue (9451) ☐ Grey (9401)  
King Size: ☐ White (9101) ☐ Blue (9151) ☐ Grey (9101)

Imprint: ☐ HL ☐ MC ☐ Ink: ☐ Blue ☐ Grey ☐ Red

ORDERED BY \_\_\_\_\_  
Address \_\_\_\_\_ Apt. \_\_\_\_\_  
City, State, Zip \_\_\_\_\_

Account No. \_\_\_\_\_ Phone \_\_\_\_\_  
☐ Charge ☐ Check or M.O. \$ \_\_\_\_\_ enclosed. Sorry, no C.O.D.'s or phone orders.

Please include Michigan Sales Tax

Your name and address custom printed on genuine vellum paper that is subtly deckle edged in the manner of fine books. Paper choice in Windsor White, Antique Grey or Wedgewood Blue. Choice of print styles HL or MC as shown with ink color in deep grey, blue or raspberry red. Choose 100 Princess sheets, 100 envelopes or 80 King size sheets, 80 envelopes.

**Special Bonus:**  
50 extra, unprinted sheets for use as second pages... only \$3 with order.



## VFW Auxiliary Names Convention Delegates

Members of Chelsea VFW Auxiliary No. 4076 held their June meeting Monday, June 14 with 10 members attending.

Reports were given on the Sixth District meeting held in Brighton on May 18. Those attending were Marien Johnson, Lucy Platt, Mary Erskine, Eulahlee Packard and Fran Zatorski.

Mary Erskine attended the planning meeting of the Sixth District, held in Hamburg on June 13, and also gave a detailed report on that meeting.

Delegates and alternate delegates were elected to attend the National Ladies Auxiliary to be held in Los Angeles, Calif., beginning on Aug. 14. Elected as delegates were Alexandria Ellenwood and Eulahlee Packard; alternate delegates are Fran Zatorski and Dorothy Lentz.

Hospital chairman Lucy Platt reported on the Friday morning coffee hours and on the upcoming picnic for the VA patients which will be held on July 6 at Delhi Metropark. The chairman stressed her need for assistance and also needs some solicited foods. Anyone willing to assist or donate food is asked to contact her.

Americanism chairman

Eulahlee Packard reported on the presentation of an American flag to the Road Commission building on Zeeb Rd.

The president reported on the success of the Buddy Poppy sales held May 21, despite inclement weather.

Mary Erskine, National Home chairman, reminded the assembly of the carnival to be held at the National Home on July 11 and urged members to pack a lunch and attend.

The following are planning to attend the Department Convention to be held in Grand Rapids from June 24 to June 27: Lucy Platt, Mary Erskine and Virginia Schirmacher along with president Fran Zatorski. Following the convention, the local newly-elected officers take charge. Beginning in July, Mary Erskine will head the local group as president.

The next regular meeting will be Monday, July 12 at 7:30 p.m. in the VFW Hall.

Alexandria Ellenwood invited the Auxiliary to view the newly purchased equipment at the fire hall on Saturday, June 19 at 10 a.m.

## Cub Scout Awards Presented

The May meeting of Cub Scout Pack 435 was called to order by Cubmaster Don Pambin on Thursday, May 27. A flag ceremony was performed by members of both the Bear and Wolf Dens to open the meeting.

Announcements and welcomes to guests and new Cubs were made and new Cubs were registered to begin membership in September.

Awards were then made to John Collins, Terry Draper, Tim Maurer, Keegan Stitt and Chris Walter, all of whom received two-year pins. Earning their three-year pins were Brian Feldman, Doug Neal, Kevin Rail, Matt Schweiger and Mike Thompson. Both Eric and Jason Crombez received their Wolf badges.

Bear Den had Holden Harris and Karl Wikman receiving silver arrows while Joey Huettman and Brian Zangara earned their Bear badges and a gold arrow each.

The Webelos had Doug Neal and Terry Draper receiving the scientist award while Brian Feldman and Tim Maurer received the scientist and outdoorsman awards. John Collins received the scientist and naturalist awards while Mike Thompson received the scientist, outdoorsman, aquanaut and Webelos awards. Kevin Rail earned the scientist, naturalist and aquanaut awards.

In a ceremony conducted by Al Feldman and Jim Collins to install Webelos as Boy Scouts, John Collins, Brian Feldman, Tim Maurer, Kevin Rail and Mike Thompson received their arrow of light awards. After crossing the bridge, John Collins, Brian Feldman, Tim Maurer, Kevin Rail, Mike Thompson and Terry Draper were welcomed into Troop 425.

Patches for the sale of Scout-O-Rama tickets were received by Eric and Jason Crombez, Joey Hafner and Joey Huettman and Scott Cordell. Brian Feldman received a patch and a flashlight. The meeting was concluded with refreshments.

## Shelly Springer Wins Scholarship At Bowling Green

More than 50 of Bowling Green State University's top business students have received scholarships and awards ranging in value from \$100 to more than \$1,000 each.

The students, all enrolled in the College of Business Administration, were recognized for their scholastic achievements, potential for future success in business careers, leadership ability and campus activities.

The College of Business Administration, the largest of Bowling Green's undergraduate colleges, includes the departments of accounting and management information systems, applied statistics and operations research, business education, economics, finance and insurance, legal studies, management and marketing as well as the School of Journalism.

Among those students receiving scholarships was Shelly Springer, a junior insurance major and the daughter of Mr. and Mrs. Sheridan W. Springer, 13771 Sauer Dr., Chelsea. She received the Fred L. Adams Scholarship, a \$250 award given annually to an outstanding insurance student. Springer is a 1979 graduate of Chelsea High school.



SCHARDEIN-STOFFER: Mr. and Mrs. James L. Schardein of Kalamazoo, formerly of Chelsea, have announced the engagement of their daughter, Barbara Lauren, to Dennis John Stoffer, son of Mr. and Mrs. John H. Stoffer of Chelsea. Barbara is a graduate of Chelsea High school and is employed by the University of Michigan Internal Medicine Associates in Ann Arbor. Dennis is a graduate of Chelsea High school and Michigan State University and is employed by Chelsea State Bank. A Nov. 6 wedding is planned.

## Tell Them You Read It In The Standard

Large Selection of Samples  
10% Discount to Senior Citizens

FREE ESTIMATES  
FREE PICK-UP and DELIVERY

**HAROLD'S UPHOLSTERING**  
(313) 475-9241

BARBARA M. WEHR, D.D.S.  
JOHN C. WEHR, D.D.S.

FAMILY DENTISTRY

9477 N. Territorial, Dexter  
in North Territorial Family Clinic  
426-4635

Our office hours:  
Monday-Thursday 7:30 a.m.-9:00 p.m.  
Friday 7:30 a.m.-4:00 p.m.  
most Saturdays 9:00 a.m.-2:00 p.m.



## KITCHEN REMODELING

★ We at Dutch Country are kitchen remodeling specialists.

★ Expert installation available.

★ Free design layout service.

★ Featuring: HAND CRAFTED AMISH CABINETS.

★ Custom Quality Cabinetry by Fieldstone.

★ Jenn-Air Appliances ★ Delta Faucets ★ Elkay & Kohler Sinks.

VISIT OUR SHOWROOM

**DUTCH COUNTRY KITCHENS**

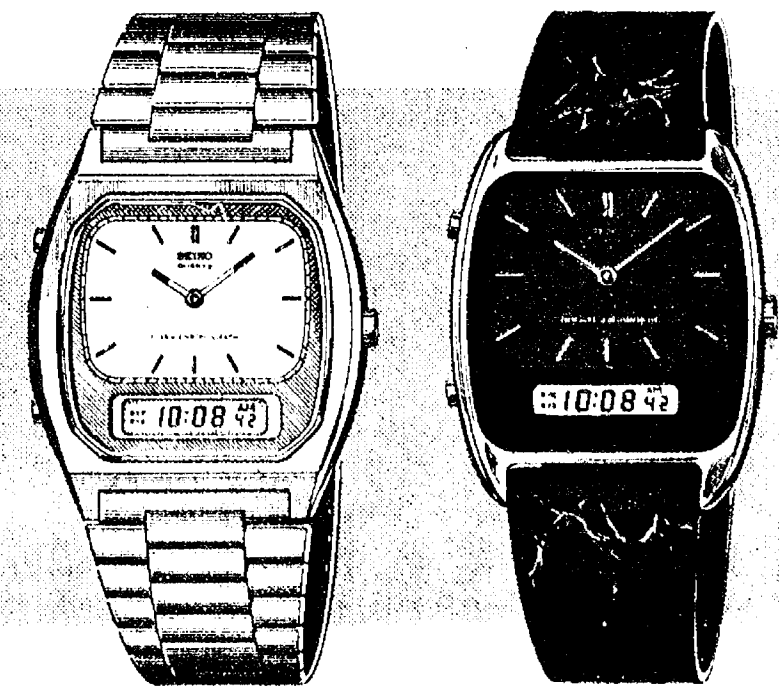
146 E. Main 428-7292 Manchester

## HAPPY 31st ANNIVERSARY

Raymond & Dorothy Egeler

—Love,  
Violet and Larry  
Rose and Tom  
Tim and Fran  
Iris and Troy

## Seiko's Personal Time Control Center does it all. Handsomely.



Uncluttered elegance. All the measurements of time you'll probably ever need. Analog and digital display of the time in two zones simultaneously. Dual alarm chime or chime system and chronograph for split-second timing. Illuminating light. Day/date, 12 or 24 hour digital modes. Stainless or gold tone, with black, gilt or white dials. Seiko Quartz. You get the best of Seiko only where you see this sign.

**SEIKO**  
AUTHORIZED DEALER

**Winans Jewelry**

## HAPPY 40th BIRTHDAY CLAUDIE

—from your In-Laws

## Senior Citizen Nutrition Program

### MENU and ACTIVITIES

Week of June 22 - 29

Tuesday—Roasted pork roll, sweet potatoes, coleslaw, rye bread and butter, fruited Jell-O. Crafts.

Wednesday—Tuna salad, potato salad, tomato wedges, hot rolls with butter, cup cakes. Recorder.

Thursday—Oven fried chicken, sunshine carrots, tossed salad, bread and butter, melon. Fitness.

Friday—Meatballs with gravy, mashed potatoes, broccoli, muffin with butter, cookie. Cards.

Monday—Stuffed green peppers, carrot and raisin salad, roll and butter, fruit. Bingo.

Tuesday—Stuffed tomatoes with cottage cheese, minted peas, muffin with butter, strawberry bavarian. Crafts.

### Senior Citizen Activities

Tuesday, June 22—

9:00 a.m.—Art class.

1:00 p.m.—Euchre.

2:00 p.m.—Travel committee.

Wednesday, June 23—

10:00 a.m.—Ceramics.

1:00 p.m.—Bowling.

1:00 p.m.—Knitting.

1:00 p.m.—Fitness.

Thursday, June 24—

1:00 p.m.—Newsletter.

Friday, June 25—

Men's day.

Monday, June 28—

1:00 p.m.—Bingo.

Tuesday, June 29—

1:00 p.m.—Euchre.

## Extension Service Offers Master Canner Program

Trying to keep food costs down? Concerned with salt, sugar and preservatives in your foods? Like satisfaction of "doing it yourself" and sharing your "know-how" with others? Then the Master Canner Program offered by the Co-operative Extension Service may be made to order for you.

In a series of six classes, the Master Canner Program provides 18 hours of training and practical experience in the fundamentals of all types of home food preservation... freezing, drying, jam, jelly making and pickling, as well as water bath canning and pressure canning. Each participant will prepare and take home a sample product for each method. Correct methods to assure quality products without loss from spoilage, or danger of food poisoning, are stressed in each class.

Instructors for the course are Extension Home Economists from Wayne, Oakland, Macomb and Washtenaw counties.

To maximize the spread of this information to others, participants are asked to pledge 20 hours of community service. Community service options include answering office phones; staffing information booths at farmers' markets, fairs or supermarkets; giving talks or demonstrations; helping with workshops; one-to-one instruction; making posters, etc. The choice depends on your interest and schedule.

Master Canner certificates will be awarded to those who complete the course, pass the final exam and fulfill the volunteer commitment. Each will receive a food preservation reference notebook.

The classes will meet from 9 to 4 p.m. Tuesdays, July 13, 20, and 27; and Aug. 3 from 9 to 12 noon in the Extension Activities Room at the Washtenaw Service Center, 4133 Washtenaw Ave. (Entrance off Hogback Rd.) The same series is also offered Tuesday evening from 7 to 10 p.m. beginning July 13 through Aug. 24.

**CAROL'S CUTS**  
40 CHESTNUT

Monday, Wednesday  
and Friday  
**475-7094**

Appts. Only  
9:30 a.m. - 3:00 p.m.

## CHELSEA COMMUNITY HOSPITAL AUXILIARY BAZAAR

9 a.m. to 5 p.m.  
**CHELSEA COMMUNITY HOSPITAL**

Featuring Crafts, Baked Goods and "White Elephants," as well as chances for a queen-size Sunshine and Shadow Quilt

\$1 per ticket or 6 for \$5

Proceeds will go toward CCH Departmental use.

## EXCITING, NEW COOKBOOK

By  
**Chelsea Community Hospital Auxiliary**

FOOD!

GLORIOUS FOOD!



... This Cookbook Tops Them All

—FAT BOB TAYLOR, WJR DISC JOCKEY,  
NOTED GOURMET & CHEF  
EXTRAORDINAIRE

Available Now at

AREA BANKS - MERKEL'S  
CHELSEA PHARMACY - GARNETT'S  
CHELSEA HOSPITAL GIFT SHOP  
CHELSEA CRAFT COMPANY  
Or Send \$8.95 plus \$1.50 postage

to

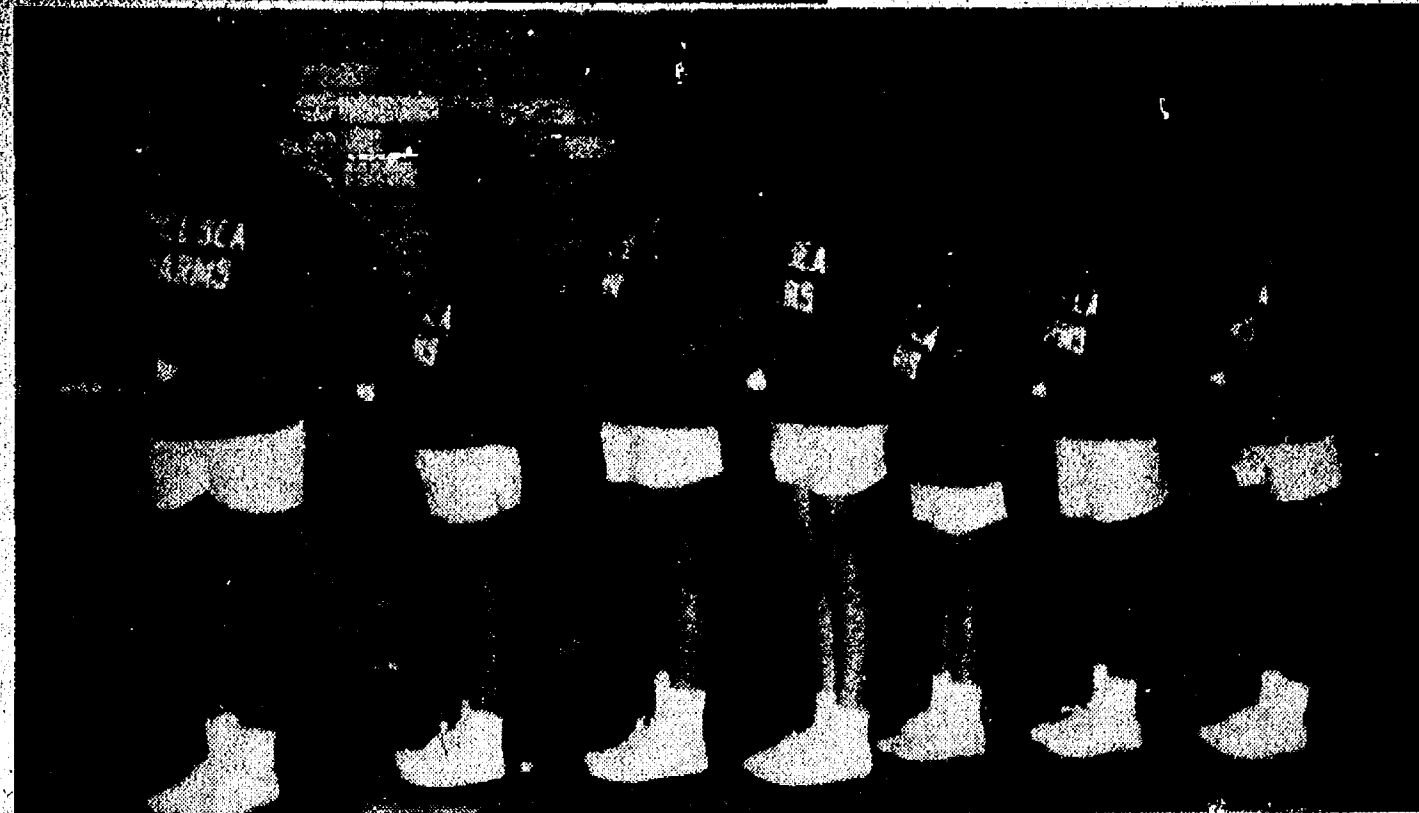
**CHELSEA COMMUNITY HOSPITAL AUXILIARY**

775 S. Main St., Chelsea, Mich. 48118

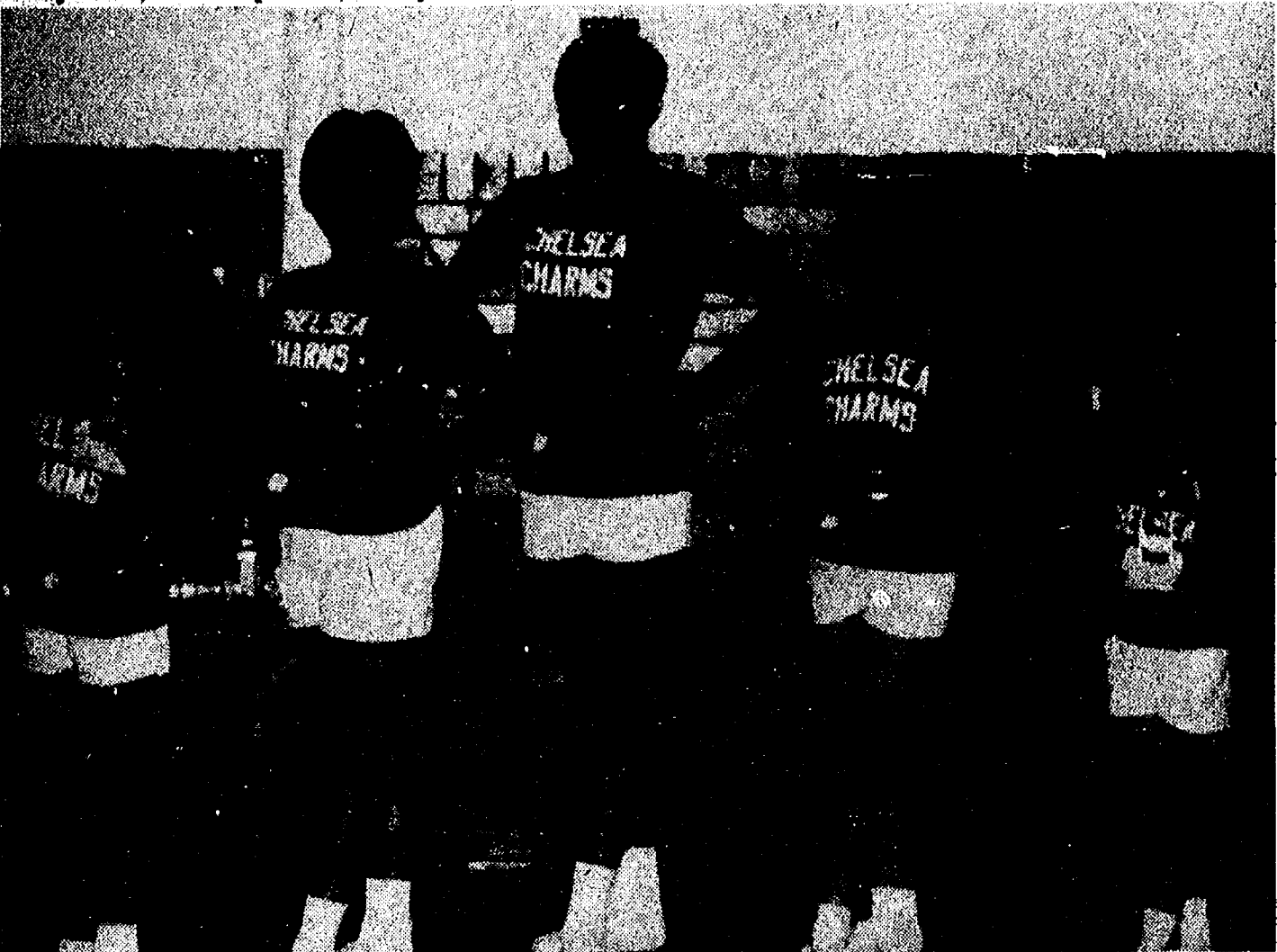


POPOVICH-ROSENRETER: Charles Popovich and Mr. and Mrs. Richard Smith have announced the engagement of their daughter, Karen, to Daniel Rosenreter, son of Mrs. Iria Rosenreter and the late John Rosenreter. Dan is a 1974 graduate of Chelsea High school and is employed by the Village of Chelsea. Karen is a 1980 graduate of Chelsea High school and is employed part-time at True Value Hardware, Ann Arbor. She is also a full-time student at Eastern Michigan University. An August wedding is planned.





**CHELSEA CHARMS MEDAL WINNERS** for the year include this array of twirlers. Among them are, left to right, Kristen Clark, military strut; Becky Kern, basic strut; Julie Miller and Amy Weir, most improved; Cristy Houle, best at-



**CHARMING TROPHY WINNERS:** At their annual recital, members of the Chelsea Charms Baton Twirling Corps received trophies for their various accomplishments during the year. Among them were, left to right, Lauri Honbaum, Laura Walton, Susan Schmunk, Michelle Graflund and Christine Dunlap.



**1982-83 CHELSEA CHARMS DRUM MAJORS:** Taking charge of the group next year will be drum major Susan Schmunk, left, followed by assistant drum major Minta van Reesema, and Laura Walton, Michelle Graflund and Liz Maurer, second, third and fourth assistants, respectively.

## Chelsea Charms Present Recital

Chelsea Charms Baton Twirling Studio presented its annual award recital at St. Mary's Gym Saturday, June 5. Thirty-two young ladies, ages four through 14, strutted and twirled, modeled and smiled for an audience of families and friends.

Top awards were presented to five members of the Chelsea Charms. Christine Dunlap topped the girls with the most merits, totalling 1,460. She received a handsome trophy, Laurie Honbaum, with a total of 419 merits, received the most merits trophy for beginning first-year students.

The teacher's award, presented to the outstanding all-around student in every capacity, was given to Laura Walton, with a score of 99.50. The Miss Majorette of Chelsea trophy, based on the best over-all score of modelling, twirling and fancy strut, was awarded to Michelle Graflund. The Drum Major for the 1981-82 Chelsea Charms, Susan Schmunk, received a beautiful tiara for her excellent abilities in leading the corps and for serving as assistant baton teacher. Each of the girls also received a free private lesson with their trophies.

The 1982-83 Drum Major will again be Susan Schmunk. Her assistant drum majors are Minta van Reesema, Laura Walton, Michelle Graflund and Elizabeth Maurer, in that order.

The new feature twirler for next year was selected from a drawing of any second-year student who had won a first-place in both strutting and twirling during the previous season. Five girls qualified. They were Kori White, Nicole Schultz, Michelle Graflund, Chrissy Dunlap and Liz Maurer. Elizabeth Maurer came out with the lucky draw and will be the new feature twirler. In the case of her inability to march in a parade, Chrissy Dunlap drew the assistant feature twirler ticket and will march in her place.

Blue ribbons were awarded to the following twirlers in the most improved category: pre-school, Danielle Roisen; kindergarten, Rosemary Burskey; first grade, Julie Miller; second grade, Amy Weir; third/fourth grade, Theresa Burskey; fifth/eighth grade, Michelle Elliott. The over-all most improved twirler for the year was a tie between Julie Miller and Amy Weir. Each girl received a medal for her improvement.

Best attitude ribbons were awarded to the following: pre-school, Kate Steele; kindergarten, Cristy Houle; first grade, Linda LaMarre; second grade, Rebecca Fischer; third/fourth grade, Stacey Gallagher and Theresa Burskey; fifth/eighth grades, Josephine Krzeczowski. The over-all best attitude medal was given to Cristy Houle.

In the best potential category, blue ribbons were given to pre-school, Danielle Roisen; kindergarten, Rosemary Burskey; first grade, Michelle Jones; second grade, Rachel Fischer; third/fourth grades, Laurie Honbaum; and fifth/eighth grades, Liz Maurer. Winning the medal for over-all best potential was Michelle Jones.

Best showmanship ribbons were received by pre-school, Nikki Schultz; kindergarten, Amy Scibor; first grade, Heather Wynn; second grade, Becky Vetter; third/fourth grades, Stacey Gallagher; and fifth/eighth grades, Minta van Reesema. Amy Scibor won the over-all best showmanship medal for the year.

In the basic strut category, the following girls were awarded blue ribbons: pre-school, Betsy Schmunk; kindergarten, Jackie Crawford; first grade, Becky Kern; second grade, Amy Weir; third/fourth grades, Vicky Niethammer; and fifth/eighth grades, a tie between Liz Maurer and Minta van Reesema.

The over-all basic strut medal was given to beginning student Becky Kern.

Five girls were awarded blue ribbons in the military strut category. They were: pre-school, a tie between Kori White and Nikki Schultz; kindergarten, a tie between Jackie Crawford and Brooke Quartermaine; first grade, Linda LaMarre; second grade, Kristen Clark; third/fourth grades, Michelle Graflund; and fifth/eighth grades, Susan Schmunk. Kristen Clark took the medal for over-all best military strut.

Twirling honors were given to the following five girls: pre-school, Kori White; kindergarten, Brooke Quartermaine; first grade, Heather Wynn; second grade, Kristen Clark; third/fourth grades, Christine Dunlap; and fifth/eighth grades, Laura Walton. The over-all twirling medal this year was awarded to Heather Wynn.

In the most merits for first-year students, the fifth place medal was given to Becky Vetter with 285 merits. Betsy Schmunk

received the fourth place medal with 296 merits. The third place medal was given to Michelle Elliott with 413 merits and topping the list with 419 merits was Laurie Honbaum. Merits are awarded for good sportsmanship, helping other twirlers, learning difficult twirls and struts, knowing a lesson, contest wins, attendance and promptness.

In the most merits category for second and third year students, Nikki Schultz earned fifth place with 952 merits. Amy Weir was fourth with 1,187 merits while Kori White had 1,346 merits for third place. The runner-up medal was won by Michelle Graflund with 1,393 merits while the top trophy went to Chrissy Dunlap with 1,460 merits.

"Big sisters" are assigned to several "little sisters" during the year in order to help the beginners learn parade routines and generally improve their abilities. An award was given to the top "Big-Little Sister" team. This year it was awarded to Elizabeth Maurer (Big Sister) and Little Sisters Becky Vetter, Vicky Niethammer, Rachel and Rebecca Fischer.

Two years perfect attendance awards were given to Amy Weir, Michelle Graflund, and Chrissy Dunlap while perfect attendance awards for the 1981-82 year were given to Chrissy Dunlap, Amy Weir, Michelle Graflund, Becky Vetter, Rachel and Rebecca Fischer, Michelle Jones, Betsy Schmunk, Laura Walton and Nikki Schultz.

Perfect attendance awards, with only one absence during the year, were awarded to Kori White, Amy Scibor, Kristen Clark, Vicky Niethammer, Heather Wynn, Susan Schmunk, Stacey Gallagher, Jackie Crawford, Brooke Quartermaine and Josie Krzeczowski.

Different classes performed routines as did the entire Chelsea Charms Corps. Solos were presented by second-year students Amy Scibor, Mikki Schultz, Kori White, Susan Schmunk, Michelle Graflund, Chrissy Dunlap, Minta van Reesema, Laura Walton, Amy Weir and Liz Maurer.

Acknowledgment and thanks was given to the flag bearers for the Charms, Dana Schmunk, and Peter and Douglas Howard. Certificates of achievement were presented to each of the girls.

In the teacher's award, 17 girls were recognized from the floor as having obtained more than a "90" average. The teacher's award is based not only on ability in twirling, strutting, but also in self-discipline, attitude, deportment, good sportsmanship, attendance, leadership ability, poise, showmanship, improvement. A possible score of 100 can be attained. The following girls were awarded medals for the teacher's award: fifth place, Kate Steele, 97.48 points; fourth place, Minta van Reesema, 97.98 points; third place, Brooke Quartermaine, 98.39; runner-up, Christine Dunlap, 99 points; and first place, Laura Walton, 99.50.

**FOOD!**

**GLORIOUS FOOD!**



## New Cookbook from Hospital Auxiliary

"Food! Glorious Food!" is the title of an exciting new cookbook recently published by the Chelsea Community Hospital Auxiliary.

"To some people, food is something to eat—nothing more. To others, food is a poem, an adventure. Its color, aromas, mouth-watering tastes are an idea to steal the imagination!" The introduction says what this cookbook is all about.

It states that its recipes are from the Chelsea Community Hospital Auxiliary and their friends. But this excellent compilation of superb recipes could easily have come from New York or Chicago. The quality and diversity of the recipes shows that the cookbook was carefully compiled and edited. The design is pleasing to the eye, crisp and easy to follow. Ingredients are placed on the left with the instructions on the right. Cooks will love the format.

The books is divided into 10 sections: Appetizers and Beverages, Soups and Sauces, Breads and Jellies, Salads and Dressings, Vegetables, Entrees (Meat, Fish, Poultry), Cheese and Egg Dishes, Desserts (General, Cookies and Candy, Pies and Pastries, Cakes and Frostings), Area Restaurant Aromas, and Herbs and Spices.

The section on Herbs and Spices is especially welcome. Few cookbooks, if any, have such a comprehensive definition of the 24 major spices together with an extensive chart on how to use them.

While the format and recipes are first rate, the photography which is used on the cover and in the section dividers is remarkable. One can almost touch the beads of water on the Vegetable section photograph and smell the Area Restaurant Aromas in that section.

photograph. The cover, with its photograph of asparagus, uniquely resembles Chelsea Community Hospital's logo of trees in a forest.

As one opens the book to the section on appetizers, one of the first recipes is Bitter-Baller (Dutch meatballs) submitted by Fred van Reesema, M.D. Reading through the recipes makes one want to try it immediately with the next guests for cocktails. There are drinks from a super Margarita recipe to the coveted Orange Julius combination. A brunch recipe of French toast made with English muffins gives a new twist to a somewhat traditional brunch menu. Sherry Sundling's "Mom's Stuffed Flank Steak" is a different use for flank and gets the taste buds working. And there are many more "mouth-watering tastes" than can be mentioned.

"Fat" Bob Taylor, WJR disc jockey, noted gourmet, and "chef extraordinaire" says about the book, "Cookbooks are coming out all the time but I endorse this one enthusiastically. This cookbook tops them all."

In short, this cookbook is well worth having. It's also a great gift idea. At \$8.95 it's a good buy. The cookbook is available now at area banks, Garnett's, Touch of Class, Merkel's, Chelsea Craft Co., and Chelsea Pharmacy.

It's also available by mail. Write Chelsea Community Hospital Auxiliary, 775 S. Main Street, Chelsea 48118. Please add \$1.50 for postage.

Minority participation in apprenticeship increased to 18.4 percent of all apprentices in fiscal 1981, up from 17.1 percent at the end of fiscal 1980, according to the annual report of the U.S. Department of Labor.

## Ann Arbor Chamber Orchestra Announces Program for Fall Season

Season tickets are now on sale for the Ann Arbor Chamber Orchestra's 1982-1983 concert season. The 25-piece orchestra, under the baton of Carl Daehler, opens its fifth season on Saturday, Oct. 2 at the Michigan Theatre in Ann Arbor with a program featuring Detroit Symphony Orchestra harpist Jane Rosenson. Other featured artists with the Chamber Orchestra include pianist Panayis Lyras, winner of the prestigious silver medal in the sixth Van Cliburn International Piano Competition; soprano Kathleen Battle, one of the Metropolitan Opera's most exciting young stars; guest conductor and violinist Alexander Schneider; and trumpeter Stephen Burns, a Young Concert Artist, in his Ann Arbor debut.

Included in this year's subscription season will be a Holiday Dessert Concert in December and a Valentine's Day Dessert Concert in February. Both programs will be presented in the Michigan League Ballroom

on the University of Michigan campus. Dessert and beverage service is included in the admission price to these performances.

To order season tickets or to obtain the 1982-1983 season brochure, call the Ann Arbor Chamber Orchestra office at 996-0066.

## U-M Museum of Art Shortening Hours

Beginning July 1, the University of Michigan Museum of Art will shorten its hours in a cost-cutting effort.

The Museum, located at the corner of S. State and S. University on the U-M campus, will be open Tuesday through Friday from 11 a.m. until 4 p.m. and on Saturday and Sunday from 1 to 5 p.m.

Admission to the Museum's galleries continues to be free.

## Tax Credit Offered for Hiring Vietnam Veterans

Employers in Michigan can earn a tax credit of \$4,500 by hiring an eligible Vietnam Era veteran.

Gordon Clowney, director of the Detroit Veterans Administration Regional Office, said the Targeted Jobs Tax Credit (TJTC) established by the Revenue Act of 1978 and extended by the Economic Recovery Act of 1981 provides for a credit of 50% of the first \$6,000 in wages paid the first year of employment and 25% of the first \$6,000 in wages paid the second year of employment for each eligible employee.

The credit may be taken on employees hired through Dec. 31, 1982, provided the employee is certified as eligible or such certification is requested in writing by the employer before the employee starts work.

For further information call (313) 226-4184 and ask about the Targeted Jobs Tax Credit.

## PRINTS & CARVINGS

★ CUSTOM FRAMING SPECIALISTS  
Prints - Needlework - Photos - Mirrors

★ LIMITED EDITION PRINTS

★ WATERFOWL  
CARVINGS by John Hriczak

Working out of our home shop enables us to sell to you at WHOLESALE PRICES!

**PAT HRICZAK - 665-0505**



The word theatre comes from the Greek word theatron, meaning "a place for seeing."

## LOY'S TV

Sales & Service

312 N. Maple Rd., Ann Arbor

"We Service All Makes"

VISA MASTER CARD

**769-0198**



There's no one else like you!

Let your WEDDING STATIONERY be as individual as you are. Choose from our wide selection of contemporary Carlson Craft wedding stationery.

INVITATIONS  
ANNOUNCEMENTS  
THANK YOU NOTES

NAPKINS  
BRIDAL BOOKS  
ACCESSORIES

**The Chelsea Standard**

Phone (313) 475-1371





IN ITS BRIEF TOUCH DOWN, Tuesday's tornado in Munith caused considerable damage on the Waterloo Rd. farm of Harold Walz. Here, a speed boat lays sideways in the rubble of a leveled barn while trees, power lines and other outbuildings in the immediate area appear untouched by the twister's destruction. According to Robert Schantz, director of Civil Defense, approximately eight unconfirmed funnel cloud sightings were reported in the area Tuesday night, though the Munith tornado appeared to be the only one to touch down in the Chelsea area.

According to Robert Schantz, director of Civil Defense, approximately eight unconfirmed funnel cloud sightings were reported in the area Tuesday night, though the Munith tornado appeared to be the only one to touch down in the Chelsea area.



TUESDAY'S TORNADO DEVASTATION is evidenced by the leveled buildings on the Harold Walz farm, 12370 Waterloo Rd., Munith. All that remained of many of the outbuildings was a pile of lumber and scattered straw bales following the early evening tornado that also killed an eight-year-old Munith boy as it briefly

touching down in the rural community. Jerry Humphrey was among three Michigan residents killed as tornadoes swept across much of southeastern Michigan, leveling buildings, downing power lines and forcing counties in the Detroit metropolitan area to issue warnings to residents to take cover.



MASSIVE CORONARY INFARCTION was the preliminary examination's reported cause of death to 52-year-old David J. Haas of Ann Arbor, formerly of Chelsea. His body was recovered from Letts Creek in Veteran's Park Friday, June 18. Removing his body for autopsy in Ann Arbor are

members of Huron Valley Ambulance Co., Washtenaw County Sheriff's Department and Chelsea Fire Department, who, in conjunction with the Chelsea Police Department, took part in the investigation.

### Ann Arbor Trust Names John Roth As Trust Officer

John H. Roth has been elected to the position of trust officer, it was announced by George H. Cress, president of the Ann Arbor Trust Co.

Long-time Ann Arbor resident Roth became a Trust Division staff member in 1979 following his employment with Bendix Aerospace Systems as manager of government and commercial contracts. Prior to that he was budget and cost analyst with Ford Motor Co.

Roth received his B.A. in economics from the University of Michigan and has attended various estate planning and federal estate tax courses. Active in community affairs, John has been a resident of Ann Arbor for 40 years.

Under the Disaster Unemployment Assistance program during 10 months of the 1981 fiscal year, 13 major disasters were declared in eight states, according to the annual report of the U.S. Department of Labor.

# Tornado Hits Munith

Bad weather in the form of heavy rains, strong winds and tornadoes has hit southeastern Michigan twice in the past week, reminiscent of last winter's frigid temperatures and blizzard-like

conditions which plagued the area for more than a month. Yes, Mother Nature's at it again.

Tuesday's storm came, sending fire whistles blowing to warn of the potential hazards and sending area residents into their basements to wait out the winds, rain and hail that pelted the area. Despite numerous unconfirmed reports of tornadoes in the area, no tornadoes reported to have touched down caused much damage, with the exception of the twister that smashed through a Munith home and fatally injured eight-year-old Jerry Humphrey. In that Henrietta township

village, a number of homes and farm buildings were leveled.

Sunday afternoon and evening were repeats of Tuesday's inclement performance as severe thunderstorm warnings gave way to tornado watches and finally evolved into all-out tornado warnings again. This time, a tornado was cited on radar in the Dexter area but a touch down was not reported.

Please Notify Us In Advance of Any Change in Address

## Lana Pollack Seeks State Senate Post

Lana Pollack, a member of the Ann Arbor Board of Education since 1979 and former chairperson of the Ann Arbor Democratic party, announced today that she is a candidate for the State Senate from the 18th senatorial district.

In announcing her candidacy, Pollack said:

"I want to represent Washtenaw county in the State Senate because I want to put to use in Lansing the experience I have gained in public office making tough decisions, asking difficult questions, and establishing important governmental priorities.

"Michigan is facing troubled times. Education from kindergarten through graduate school has reached a crisis point; the cost of health care has climbed to an intolerable level; our family farms are faced with the prospect of bankruptcy; unemployment is at the epidemic stage.

"I believe that my background as an elected official who has worked with other elected officials, both in my city and in Lansing, qualifies me to participate effectively in ordering our priorities in Michigan and to contribute significantly to better management of state government."

Pollack served as co-director of Senator Edward Pierce's successful campaign in 1978, and as regional co-ordinator for his campaign for the gubernatorial nomination. In 1980, she was Washtenaw county co-ordinator of Kathleen O'Reilly's campaign for the United States House of Representatives.

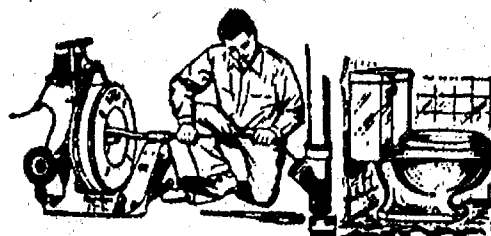
A graduate of the University of Michigan with bachelor's degree in political science and an M.A. in education, Pollack has taught social studies, dance and basic education in the United States and Africa, where she also served as a school administrator. An active member of the Michigan Association of School Boards, she served on its long range finance planning committee, recommending courses of action for the financing of public education in Michigan.

Pollack lives with her husband, Henry, and their son, John, at 2065 Columbia, Ann Arbor.

At the end of the 1981 fiscal year, more than 1.5 million persons receiving or applying for Aid to Families with Dependent Children (AFDC) were registered with the Work Incentive Program (WIN), according to the annual report of the U.S. Department of Labor.

## DRAINS and SEWERS CLEANED ELECTRICALLY

SINKS  
DUMPS  
TOILETS



FLOOR  
DRAINS

MAIN  
LINES

STORM  
SEWERS

PROMPT SERVICE

SEPTIC TANKS-Cleaned, Installed, Repaired  
DRAINFIELD & OTHER EXCAVATING

•RESIDENTIAL •COMMERCIAL •INDUSTRIAL

BOLLINGER SANITATION SERVICE

PHONE (313) 475-2097

We're working to make your future a little more predictable.



DAVE ROWE CFCU

107 1/2 S. Main, Chelsea, Mich. 48118  
(313) 475-9184

To us, insurance is a way to provide security for you and those you love. We're here to help with all your insurance needs—life, home, farm, car, business and more. We'll be there when you need us, serving you promptly, dependably, and with knowledgeable insurance counsel.

FARM BUREAU  
INSURANCE  
GROUP



# Jiffy market

Big Enough To Serve You . . . Small Enough To Know You!

Corner of Sibley and Werkner Rds. - Chelsea, Michigan 48118

PHONE 475-1701

Sale Prices Good June 22 - June 26

Complete Fresh Meat Dept. - U.S.D.A. Choice Beef - The Finest of Fresh Pork

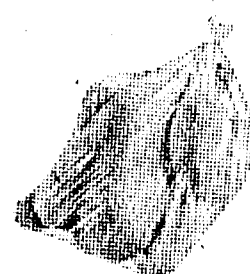


YOUNG PORK-LEAN-TENDER

Quartered

PORK LOINS

1/4 Pork Loin  
Sliced into  
9 to 11 chops \$1.59



Whole  
Fryers

59¢

CHICKEN  
PARTS

Breasts . \$1.19

Thighs . . lb. 89¢

Drums . . lb. 79¢

Wings . . lb. 53¢

Backs . . lb. 12¢

WILSON CRISP RIPE

SLICED BACON . . RANDOM WEIGHTS lb. \$1.39

WESLEY'S QUAKER-MAID

FLAVOR OF THE MONTH

Peach Sundae  
ICE CREAM

1/2 gal. \$1.99

CALIFORNIA

HEAD  
LETTUCE

49¢ ea.

FARM MAID  
HOMOGENIZED  
MILK . . . . . gal. \$1.98

LOW-FAT  
MILK . . . . . gal. \$1.69

ORANGE  
JUICE . . 1/2 gal. \$1.19

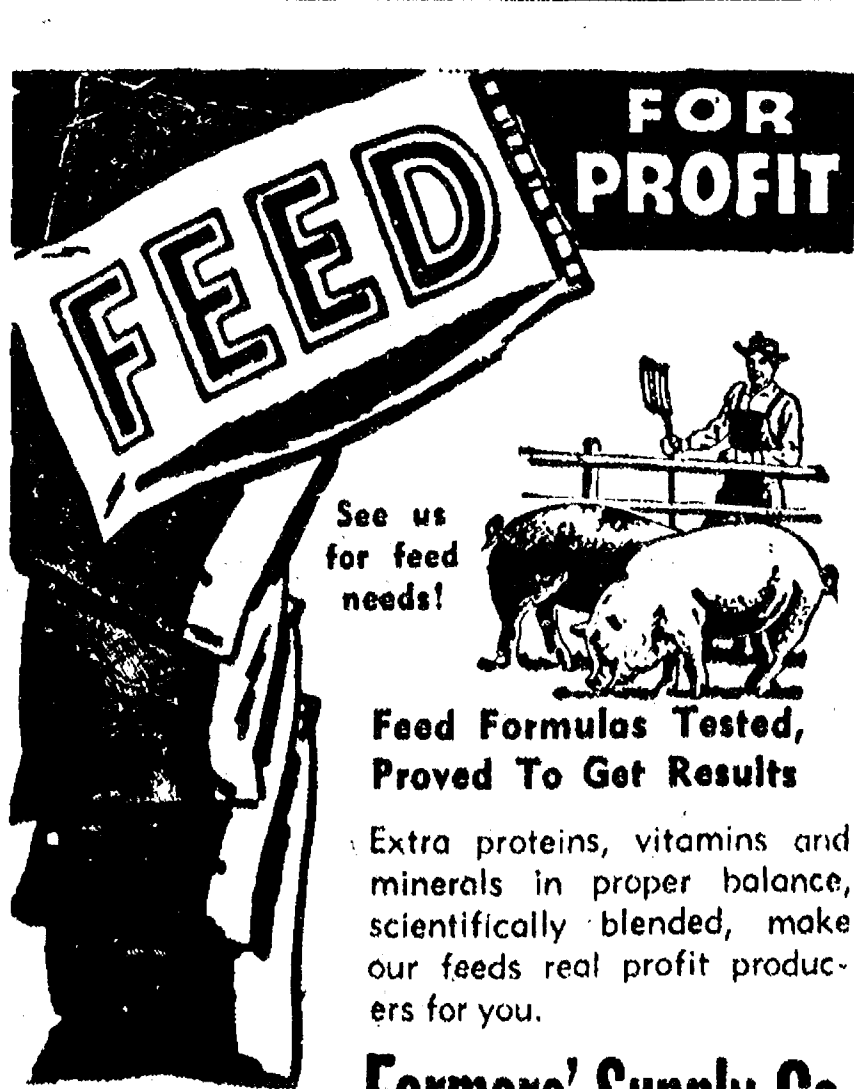
TAKE THE PEPSI CHALLENGE

PEPSI-COLA . . 8 pac 16-Oz. Bottles \$1.99

FRESH MEATS - GROCERIES - PRODUCE - BEER - WINE - LIQUOR

Open 7 a.m. Morning to 10 p.m. Nights - 7 Days a Week

## CLASSIFIED ADS Really work



Farmers' Supply Co.  
Phone 475-1777

## Congratulations RAY ESCHELBACH

You are the winner of Chelsea Hardware's Simplicity Diamond Anniversary Drawing

A TWO-CARAT UNCUT DIAMOND  
NUGGET WITH GOLD-FILLED  
PENDANT & CHAIN

When you want dependability, look for...

Simplicity  
AN ALLIS-CHALMERS COMPANY

CHELSEA  
HARDWARE

110 S. Main St., Chelsea

Ph. 475-1121





# COMMUNITY CALENDAR

**Monday—**

Chelsea Kiwanis Club meets every Monday, 6:30 p.m. at Chelsea Community Hospital.

Chelsea School Board meets the first and third Mondays of each month, 8 p.m., in the Board Room.

Parents Without Partners—Support Group for single parents, Monday, June 28, 8 p.m. Call Dianne Twining at 769-7068 for directions.

St. Mary's Altar Society, first Monday of each month, 7:30 p.m., at Rectory basement.

Chelsea Lioness, second Monday of each month at the Meeting Room in the Ann Arbor Trust Co. on M-52, Chelsea, at 7:30 p.m. Call 426-7179 or 475-9455 for information.

Lima Township Board regular meeting first Monday of each month, 8 p.m., Lima Township Hall.

Recreation Council, second Monday of each month, 7:30 p.m. in the Village Council room above the police offices. Open to the public.

**Tuesday—**

Lima Township Planning Commission, third Tuesday of each month, 8 p.m., Lima Township Hall.

Chelsea Village Council, first and third Tuesdays of each month.

Sylvan Township Board regular meetings, first Tuesday of each month, 7 p.m., Sylvan Township Hall, 112 W. Middle St.

Inverness Country Club pot-luck and euchre party, 6:30 p.m., first Tuesday of each month.

Lions Club, first and third Tuesday of every month, 6:45 p.m., at the Wolverine Lounge.

Chelsea Community Hospital Nutrition Program, pre-natal nutrition classes, fourth Tuesday of each month, 6 to 7 p.m. at the hospital. To register, phone 475-1311 (ext. 354). Class is free of charge.

Rebekah Lodge No. 130 first and third Tuesday of each month, 7:30 p.m.

**Wednesday—**

Chelsea Communications Club, fourth Wednesday of each month, 8 p.m., Chelsea Lanes basement meeting room.

Chelsea Child Study Club second and fourth Tuesday of each month, 8 p.m.

Chelsea Jaycees, first Tuesday of each month. For more information call Jerry Martell, 475-1966.

Chelsea Rod and Gun Club regular meeting, second Tuesday of each month at the clubhouse, Lingane Rd.

**Thursday—**

Chelsea Band and Orchestra Boosters, second Thursday of each month, 7:30 p.m., high school band room.

Chelsea Class of '86 meeting, Thursday, June 24, 3 p.m., Pierce Park.

Knights of Columbus Women's Auxiliary, second Thursday of each month, 8 p.m. at K. of C. Hall, 20750 Old US-12.

Lyndon Township Planning commission will now meet at 8 p.m. the second Thursday of each month.

**Friday—**

Senior Citizens meet third Friday of every month, pot-luck dinner, games and cards, 6 p.m. at Senior Citizens Activities Center at North School.

**Sunday—**

Waterloo Nature Center will present "Reptiles and Amphibians," Sunday, June 27, 2 p.m. Cost, 50 cents per person. WNHA members, free.

**Misc. Notices—**

Home Meals Service, Chelsea. Meals served daily to elderly or disabled. Cost per meal, \$2.25 for those able to pay. Interested parties, call Barbara Branch, 475-7844 or Ann Feeney, 475-1493.

Chelsea Social Service, 475-1581, 2nd floor of Village Offices. Thursdays, 10 to 4, or if an emergency need at other times, call Linda at 475-7405 or Jackie at 475-1925.

North Lake Co-Op Nursery school is now taking enrollments for the 1982-83 year for 3- and 4-year-old sessions. Anyone interested should call Gale Johnson, 475-1284.

Lamaze childbirth preparation classes are offered continually at Chelsea Community Hospital. To register, call 475-9558 or 475-7484.

Chelsea Co-op Nursery is now accepting applications for September, 1982. Please call Pat Peterson, 475-3282, or Deborah Feldkamp, 475-2825.

If you need help with clothing, shelter or putting food on the table, Faith in Action can help. We have food and clothing, and can help in other ways when the need arises. Please call 475-2003 or 475-2594, 10 a.m. to 8 p.m.

## Area Students Win EMU Scholarships

Eastern Michigan University's Office of Financial Aid has announced that 54 students have been selected to receive scholarships at EMU for the upcoming academic year.

The group of scholarship recipients is the second identified by the Financial Aid office this year. More winners will be announced in upcoming weeks.

Of the 54 students, three have been selected to receive the University's prestigious Regents Scholarship and 25 will receive the University's Recognition of Excellence Award. In addition, 16 students will receive Departmental Recognition Awards of Uniqueness.

The EMU Regents Scholarship is the most prestigious award offered by the University. It is a \$1,200 scholarship and requires a minimum 3.75 grade point average and test scores of 24 on the American College Test or 1050 on the Scholastic Aptitude Test. The scholarship is renewable if a 3.5 grade point average is maintained at EMU. It is not based on need.

The EMU Recognition of Excellence Awards are \$1,000 scholarships for outstanding high school or community college students with at least a 3.5 grade point average. One award has been designated for each community college and high school in Michigan. Additional awards are given to Michigan schools and out-of-state schools as funds permit.

Departmental Recognition Awards of Uniqueness are \$750 scholarships for students with a minimum 3.0 grade point average and a special interest in one of EMU's academic majors.

Receiving the Regents Scholarship was Tony J. McCoy of 4125 Sunset Ct., a graduate of Dexter High school. Sarah D. Leisinger of 3741 Silver Fox Dr., Chelsea, was the recipient of a 1982-83 Recognition of Excellence Award and Lesley A. Muir, 70 Lakeview Dr., Whitmore Lake, also received the scholarship in recognition of excellence.

Telephone your club news to 475-1371

## MARGIE'S UPHOLSTERY

FREE ESTIMATES

• Large Selection of Materials  
• Upholstery Supplies  
• Repair Service

Pick-Up and Delivery Available

MARJORIE SMITH

Ph. 1 (517) 536-4230

Call Collect between 8 a.m.-6 p.m. Monday thru Saturday

6245 Brooklyn Rd., Napoleon



NORTH SCHOOL SPELLERS met their match at the closing of school for the summer when third graders took part in the final spelling bee of the academic year. Winner in the contest was Jenny Schutz, left, while Marcie Wales gave Jenny strong competition and placed second.

## Named to Ferris State Honors List

More than 1,900 Ferris State College students are included on the academic honors list for the recently completed spring quarter, according to Dr. Donald A. Priebe, vice-president for academic affairs.

To be eligible, a Ferris student must have compiled a 3.25 grade point average in at least 14 quarter hours of graded work.

Among those earning honors were Robert B. Young and Anita S. Powell of Chelsea, Robert J. Beitel, Jr., Sandra Guy and Timothy P. Murphy of Whitmore Lake, and Bryan L. Eisenhauer of Manchester, who received a perfect 4.0 grade point average.



## Juke Box Rentals

for:

- ★ REUNIONS
- ★ RECEPTIONS
- ★ PARTIES

... every special event

*Zemke*

Operated Machines

(313) 662-1771

## Sunday BBQ Buffet

4 - 7 P.M.

All-You-Can-Eat

**\$3.95**



The FRIENDLIEST Food & Drink Establishment in Jackson

Off I-94 At Sargent Rd. Exit - (517) 764-1200



fun, food & drink

Standard Want Ads Get Quick Results!

## Closed Circuit Satellite TV

THURSDAY — Detroit Tigers at Baltimore  
PITCHER OF BEER - 1/2 PRICE

GREAT FOOD and GOOD DRINKS

For Your Dancing Pleasure and Enjoyment—

"DENNIS RUBY and THE PERSUADERS"

Music for all ages

Friday and Saturday, 9:30 p.m. to 1:30 a.m.

NO COVER CHARGE

—SPECIALS—

Wednesday — T-Bone Steak Dinner for 2 . \$9.95

Thursday — Chicken Dinner . . . . . \$4.95

Friday — Perch Dinner . . . . . \$4.95

## LITTLE ROOSTER RESTAURANT & LOUNGE

11485 North Territorial Rd.

Ph. 426-8668

Tues., Wed., Thurs. . . . . 4 p.m. to 10 p.m.  
Friday, 4 p.m. to 2 a.m. . . . . Saturday, 12 p.m. to 2:30 a.m.  
Sunday . . . . . 12 p.m. to 11 p.m.

CARRY-OUTS 426-8668 • PIZZA • FRIED CHICKEN

COME WITH . . .

## The JACKSON SENIOR TRIPPERS To CHESANING SHOW BOAT - July 17-18

- Front seats to see JACK JONES
- Overnight lodging, 3 meals
- Church on Sunday
- Tour of private home - \$4 million in antiques in Saginaw.
- Back thru Frankenmuth

TRAVEL BY DELUXE MOTORCOACH

PICK-UP IN CHELSEA

**\$89.00**

ALSO: VERMONT, MONTREAL

By Deluxe Motorcoach - Sept. 1-8 or Sept. 23-28  
10 meals - Many attractions included

**\$394.00**

**PAT SPEISER-Call (517) 784-8908**

## THE CAPTAIN'S TABLE

FINE FOODS AND COCKTAILS

Join Us for Our Daily

## LUNCHEON SPECIALS

Soup and Sandwich or Soup and Salad

## EVENING SPECIALS

Monday . . . . . Our regular menu

Tuesday . . . . . Chicken Buffet

Wednesday . . . . New York Strip Steak

Thursday . . . . . Roast Beef Buffet

Friday . . . . . Prime Rib

Lake Superior Whitefish

Saturday . . . . . Prime Rib

WITH SALAD BAR

Choose from Our Scrumptious  
Home-Made Dessert Cart  
Friday and Saturday Evenings

HOURS: Monday thru Friday . . . 6 a.m. to 9 p.m.  
Saturday . . . . . 7 a.m. to 9 p.m.

8093 Main St.  
Dexter

**426-3811**

## AMERICAN LEGION POST 31'S

## 4TH JULY CELEBRATION

## CHICKEN BARBECUE

**12:00**

## 4 WHEEL DRIVE TRUCK PULL

**1:00**

## ICE CREAM SOCIAL

**5:00**

## FIREWORKS DISPLAY

AT DUSK

CHELSEA FAIRGROUNDS



# Talented Cast Promises Great Show in 'My Fair Lady'



**"WITH A LITTLE BIT OF LUCK":** Joe Diederich, alias Alfred P. Doolittle cavorts on stage with his Cockney cronies, Dave Lamberson and Thad Bell, during rehearsals for the Chelsea Area Player's upcoming summer presentation, "My Fair Lady," slated for a mid-July run.



**SET CONSTRUCTION** for "My Fair Lady" is well underway. Above, Tom Mull saws some wood as he assists technical director Brian Myers in the building of necessary props for the Chelsea Area Players' upcoming production.

## C. of C. Planning Three Brochures To Promote Area

Several brochures on the Chelsea area are currently underway by the Chelsea Area Chamber of Commerce. They are an industrial brochure, a Chelsea community brochure, and a "Fact Sheet." The Chamber has determined there is a significant need for all three brochures. The industrial brochure will be used in conjunction with the Chamber's Economic Development Program. The fact sheet will be available to area real estate offices and community groups. The community brochure will be produced in conjunction with the Chelsea Kiwanis Club and will be used to promote tourism in the area. It is expected that the brochures will be completed in early fall.

Subscribe today to The Standard.

Rehearsals are in full swing and various committees are hard at work to ensure the success of the Chelsea Area Players' July 15-18 production of one of the oldest and most engaging of all Cinderella stories, "My Fair Lady."

Under the direction of Jeanette Tracy Brock, cast members are striving to perfect their upper-class English and Cockney accents, while choreographer Sue Bauer, labors nightly teaching the varied dance routines. Technical director, Brian Myers, and crew have hammers and paint brushes flying and promise their efforts will result in some of the most elaborate sets in the Chelsea Area Players' 10-year history.

All in all, excitement is running high over this 10th anniversary production for the Players. Perhaps the secretive smile seen on the face of the lovely "fair lady" on some posters around town is hinting that we all have a big treat in store for us in a few short weeks.

Certainly a large part of this excitement is a result of the excellent casting of "My Fair Lady" and as the roles continue to take shape, the "rehearsal audiences" are growing more and more enthusiastic.

Ric Foytic, who made his stage debut as the irrepressible and hilarious Luther Billis in last year's "South Pacific," is "wow-ing them again" in the male lead role of the aristocratic phonetics professor, Henry Higgins. Ric seems to have captured the essence of Higgins as the short-tempered, self-centered bachelor who will sing of his passion for good diction in the famous "Why Can't the English Teach Their Children How To Speak?" and reveal his lack of passion for women in two equally gay patter songs, "I'm An Ordinary Man" and "Why Can't a Woman Be More Like a Man?"

Ric is a former Chelsea resident and a 1972 graduate of CHS and now resides with his wife and two children in Napoleon. He and his wife own and operate Ricardo's Family Haircutting in Chelsea. He was a member of the Symphony and Jazz Bands in

high school and most recently played guitar and sang with a four-piece country and western band.

Becky Smouse, as the female lead, Eliza Doolittle, will have the role of the cold-hearted professor's guinea pig for proving that by mending her diction he can make a fine lady out of a bedraggled street urchin. In this Cinderella-like role, Becky sings such notable songs as "The Rain in Spain" and the exhilarating "I Could Have Danced All Night" and also quite convincingly bites out "Just You Wait" (her longing for revenge on her merciless teacher).

"My Fair Lady" marks Becky's third appearance with the Chelsea Players. She appeared in the choruses of both "The King and I" and "South Pacific." She is an Ann Arbor resident and will be a senior at Huron High school in the fall. She has been involved in theatre for the past four years and has appeared in several high school productions as well as in the Ann Arbor Junior Theatre's 1980 production of "Alice."

Eliza's rascally father, Alfred P. Doolittle, will be played by Joe Diederich, who will sing the famous Cockney songs of the show, "With a Little Bit of Luck" and "Get Me to the Church on Time." Joe's versatility as an actor will be readily apparent as theatre-goers recall his memorable portrayal of Emile de Becque in last summer's "South Pacific."

Joe and his wife have lived in Chelsea for four years and he is a member of the Chelsea Community Choir. Prior to moving to Chelsea, Joe was in the Army for eight years and was very active in their performing arts program.

Some of the other leading roles will be played by John Williams, as Col. Pickering, the cool observer with whom Higgins makes his bet; Mark Taylor in the role of Freddie, the bumbling fellow who falls in love with the transformed Eliza; and Julie Vorus as Mrs. Higgins, the snobbish mother of the experimenting professor.

John Williams is the Chelsea

High school principal and "My Fair Lady" marks his acting and stage debut. He has lived in Chelsea for five years with his wife, Sue, and three daughters.

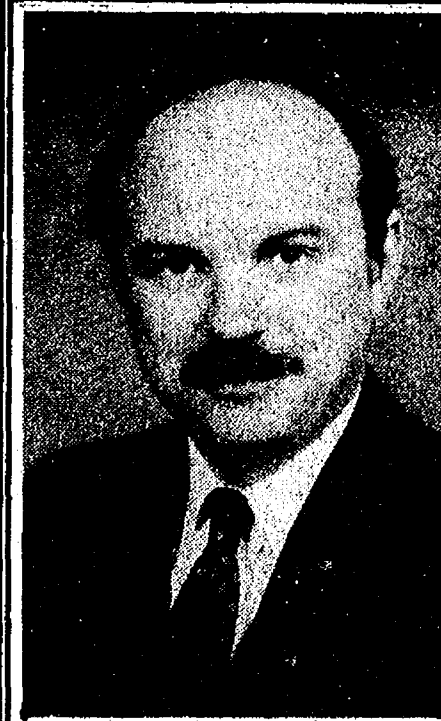
This is Mark Taylor's second appearance with the Chelsea Players, his first being the lead role in their 1979 "Bells Are Ringing." Mark has a varied theatrical background, having appeared in several high school and college musical and non-musical productions. He has been personnel director at Chelsea Community Hospital since 1977 and lives in Manchester with his wife and two sons.

"My Fair Lady" will mark Julie Vorus' seventh appearance with the Chelsea Players. In recent years she has had roles in "Plaza Suite," "Vanities," "Bells Are Ringing," "Sweet Charity," "Anything Goes" and the chorus of "The King and I." Julie has also performed and directed in productions of the U.

of M. Faculty Wives Drama Group. She and her husband, Bill, live at North Lake and have four sons.

The other two female lead roles are those of Mrs. Pearce; Professor Higgins' maternal housekeeper, and Mrs. Eynsford-Hill, Freddie's aristocratic mother, who is determined to discourage his romantic notions about Eliza. Jean Stanley will be appearing in her second portrayal of the role of Mrs. Pearce. She played this part in a 1973 production for the Jackson Musical Theatre. This will be Jean's Chelsea Players debut, although she has been involved in area theatre for the past 11 years. She has appeared in several productions for the Jackson Civic and Musical Theatre groups and for the Clark Lake Players' summer theatre group. Jean lives in Grass Lake and has five sons.

(Continued on page eight)



JOHN W. MITCHELL  
OWNER-DIRECTOR

Respected By Tradition . . .

Dedicated To Service . . .

## Staffan

FUNERAL HOME

124 Park St., Chelsea Ph. 475-1444  
"Serving The Chelsea Community Since 1862"

# SALE!

SALE PRICES GOOD TUESDAY THRU SATURDAY, JUNE 22-27

## 25% OFF

- ★ BALDWIN BRASS
- ★ SEIDEN BRASS
- ★ HAND-CARVED DECOYS

ARABIA ENAMELWARE BOWLS  
Reg. \$25 - NOW \$14.95

### BURNS OF BOSTON FRAMES

5"x7" and 8"x10"  
WAREHOUSE SPECIAL - 100 IN STOCK

Reg. \$15 to \$20 Retail Prices  
**YOUR CHOICE - \$7.98 ea.**

### GOING OUT OF WOODEN BATH ACCESSORIES

By Maleck

- T. P. HOLDERS
- SHELVES
- TOWEL BARS
- SOAP HOLDERS

### INTERDESIGN MIRRORS

Blue, Yellow, White  
Brown, Red.

Reg. \$15.50  
**NOW \$9.98**

**HELP!** Laurie got carried away and bought too much at the market and now must reduce her inventory. Her mistake can be to your benefit in huge savings!

## 50% OFF

- ★ SMITH GLASSWARE
- ★ MEN'S HAND-CARVED BACKGAMMON, CHESS SETS

Reg. \$66 - NOW \$33

- ★ HAND-PAINTED JEWELRY BY PAT . . .

Necklaces - Bracelets - Earrings - Pins, etc.

- ★ BIRD FEEDERS
- ★ WOODEN SCONCES
- ★ KAMAR DOLLS
- ★ SPECIAL BRASS ITEMS & ACCESSORIES

### SOLID BRASS CHEST

Reg. \$110-NOW \$59.95

### HAND-CARVED IMMIGRANT'S TRUNK

Reg. \$160 - NOW \$79.95

### MALEK WOODEN BAR/DESK SHELF

Reg. \$172 - NOW \$89.95

HURRY IN FOR BEST SELECTION - SOME ITEMS FEW OF A KIND

# DAYSPRING GIFTS

116 S. MAIN ST., CHELSEA

PHONE 475-7501



# Letters to the Editor

EDITOR'S NOTE: All letters submitted to The Chelsea Standard must be no longer than one double-spaced typewritten page and should be in reference to situations regarding Chelsea, its people and its surrounding areas. This column is not intended to be used for spreading information of any special pressure group or political faction, controversial or otherwise. It is your space to agree or disagree with our publication, other letters and issues raised regarding village, school district policies and the like. We reserve the right to limit to a reasonable amount the number of letters appearing in the column annually and written and/or submitted by the same person or persons.  
The Publishers

Dear Mr. Editor:

In the issue of June 1 of The Standard there were rebuttals to the letter written by myself which was printed in the May 25th copy of The Standard. Since the writers singled their responses to me directly, then time for rebuttal please.

AP release of May 26—"Reagan Supports Memorial Service for 17,000 Aborted Fetuses—Los Angeles (AP)—A California anti-abortion group says President Reagan supports their proposal to hold memorial services for up to 17,000 discarded fetuses found in a large storage bin. "Your decision to hold a memorial service for these children is most fitting and proper," Reagan said in a May 5 letter to the California Pro Life Medical Association, which released the letter's contents Wednesday. "On such an occasion we must strengthen our resolve to end this national tragedy," it said. "I am hopeful that evidence like that found in California will move those who have thus far preferred silence or inaction, and encourage them to agree that something must be done," Reagan wrote. No date for such a service has been set.

District attorney's spokesman Al Albergate said the fetuses remain in the possession of authorities during a criminal investigation into whether they were aborted or disposed of illegally.

Investigators must comb through a truckload of records kept at Weisberg's lab, Medical Analytic Laboratories, Inc., where tests were made on aborted fetuses from California and other States to determine their size, weight, and health. Weisberg is not under investigation for performing abortions, DA office says but there is possibility that criminal charges could be lodged against some physicians. He said the only charges that could be filed against Weisberg, not a medical doctor, would involve improper disposal of lab specimens and human tissue, which under law either must be burned or buried after scientific testing." End of AP release.

The 2,000 fetuses in the first estimate without counting is now 17,000—this is a fact.

Since legalized abortion, the rate of child abuse and neglect, abuse of elderly, rape, are on the increase not the opposite as those who endorse "abortion" as a "cure all" to these serious crimes against another human being occur. The unborn child does not know hatred unless it hears it from its home in the womb, for they do hear. A baby is born with the unmatched gift of trust, ability to learn, ability to feel, ability to live life and love, to the fullest measure of our talents. Therefore, it is the education of the parent-to-be that is necessary.

Yes, an ounce of prevention is worth a pound of cure. Instead of funding abortions with the taxpayer's money, why not education of parenting on a gigantic scale for those who need it. When one loses respect for the gift of life, of the unborn, one is bound to lose respect on all levels, result... crime. The accounting is no trickery of Pro-Lifers, but 17,000 fetuses is just stark naked truth

of fact. May all mankind have the grace to understand that these tiny, budding lives have a right to life, liberty, and the pursuit of happiness... just like you and me, Mr. Editor and your Readers. I rest my case.  
Mrs. Millie Warner.

Dear Mr. Editor:

(This is not an original opening, I borrowed it.) I am glad to see someone has finally hit the root of the Millie Warner controversy. Caroline Enderle has succinctly stated and concluded the whole matter: "There are no right answers, just everyone's own opinion." This of course is not just a Millie Warner issue, but a problem which affects the very roots of our society.

In the realm of moral issues today there is no right or wrong—no black or white—no thesis or antithesis—A does not any longer equal non-A but there has to be a synthesis. Now this allows for a situation ethic—a gray area which allows opinion to dictate. If this is where we are then there is truly no answer that is "right." If there are no absolutes then who, really, is to say what is right or wrong.

What a beautiful existential existence we can all have. Where experience gives validity it is not the value of the experience but the experience is the value. In the realm of morals this is to say that action provides reason to exist, validity, not the quality of action (right or wrong) but the action itself. In other words, in this system, it is just as right to push the old person down in the street as it is to help them cross the street. I mean who's to say what is right or wrong—we can't rely on common decency—some of us haven't any and other are warped. (Nothing is common—who dictates common there is no opposite).

Does society dictate—it is made up of people and people's opinions differ; do we become a law unto ourselves: Where opinion is all we have there is no law—morality without an absolute infallible base is no morality. In this framework (no absolutes) we are at a loss to say who's opinions are right.

I may be criticized for making this a philosophical issue of absolutes and morality, but is that not the underlying issue? Then of course this is just my opinion.  
Richard Howard.

To the Editor:

Many concerned citizens are getting signatures on petitions for a nuclear freeze. There is nothing to be gained and plenty to be lost from making agreements with the USSR. The Kremlin has an unbroken record of breaking solemn pledges whenever doing so suited its purposes.

Consider the Lend-Lease agreement which called for our nation to provide billions of dollars worth of equipment to the USSR. They were to pay for it at a later date but practically none of the \$11 billion has been paid. Also, 84 ocean-going ships were kept in Russia which were used to carry equipment to North Vietnam during the Vietnam War.

The Sept. 12, 1944 agreement guaranteeing France, England, the U.S., and the USSR equal access to all four sectors of the divided city of Berlin has been fractured repeatedly. The Berlin Wall, erected in 1961 has denied access to the Soviet-occupied sector of the city and has made it impossible for refugees to flee from Communist-held East Germany.

On Oct. 28, 1962, Soviet Premier Khrushchev pledged to remove missiles from Cuba, allow internationally supervised inspections and withdraw soviet troops from

## Complete Hunter Safety Course

Eleven boys and one girl completed two nights of instruction at the Chelsea Rod and Gun Club to qualify for their Michigan hunting licenses. Four instructors, who are members of the club, provided the training. They are Lloyd Harden, Jerry Craft, Marv Schiller and George Fadgham. All are certified by the Michigan Department of Natural Resources and by the National Rifle Association.

Educational requirements for hunting licenses are established by state law and the instructors of the Chelsea Rod and Gun Club are the only instructors qualified by the Department of Natural Resources in the Chelsea area.

### Resumes Sought for Vacancy on Emergency Medical Services Comm.

Washtenaw County Board of Commissioners will make one appointment of a consumer representative to the Emergency Medical Services Commission for a term that expires, Dec. 31, 1982. The term is left vacant by the resignation of Walter Jarrell.

A one-page resume should be addressed to Carol Hampton, Controller/Administrator, County Administration Building, P.O. Box 8845, Ann Arbor 48107. Those resumes received by Friday, July 2 will be submitted to the Board of Commissioners for their consideration on July 7.

that island nation. None of the pledges was ever kept.

SALT I was signed in May 1972. The Oct. 21, 1974 issue of Aviation Week and Space Technology magazine, detailed numerous Soviet violations of this agreement including concealment of missile silos, hiding of nuclear-armed submarines, and development of an anti-ballistic missile (ABM) system.

I could go on but there is no need to do so. The record is clear that the only advantage gained by making agreements with the Soviets is gained by them. To suggest that we freeze or scrap our nuclear weapons and expect them to do likewise is to suggest suicide.

Josephine Lutchka.

Dear Editor:

As the wife of a law enforcement officer, I am not easily shocked. But as a regular reader of The Chelsea Standard (a family - community newspaper, I thought), I was offended by the obscene drawing in Letters to the Editor June 15. I will not call it a "cartoon"—as those are meant to amuse and this surely did not!

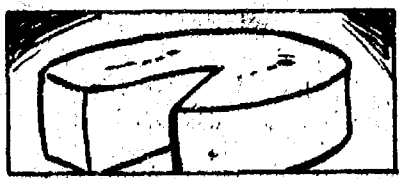
It makes me sad to live in a society where endangered wildlife and starving refugees overseas (both worthy causes) are brought to our attention as deserving of aid while at the same time millions of innocent unborn human babies are legally being killed. Surely our Founding Fathers were serious when they stated their belief that "all men are created equal" and have the "right to life, liberty and pursuit of happiness." How far we have strayed from that belief—and from the Creator of all life! Many of our most helpless citizens are being denied that basic right.

Because I am the mother of several adopted children I have a special reason to be deeply grateful to those women who have borne their unplanned or unwanted pregnancies to full term. There is an alternative to abortion.

Carol M. Gallas.

The instruction is based on the Hunter Safety Education Handbook published by the DNR. It consists of four sections—hunter responsibility, firearms, bows and arrows and shooting, wildlife identification, management and game care, and survival and first aid. The teaching is conducted with the aid of audio visual materials and individual hands-on instruction.

No charge is made by the club members for their educational services. The Chelsea Rod and Gun Club is a member of the Michigan United Conservation Clubs which, in turn, are affiliated with the National Wildlife Federation.



The first cheddar cheese factory in the United States was built by Jesse Williams near Rome, N.Y., in 1851.



HUNTER SAFETY STUDENTS, who qualified for their Michigan hunting licenses during two evenings of instruction at the Chelsea Rod and Gun Club include, left to right, Howie Merkel,

Pat Houle, Craig MacIag, Tina Steger, Jeff Pratt, Jeff Steele, Tracy Guard, Shawn Brown, Jim Cook, Curtis Satterthwaite, David Erskine and Todd Rowe.

### Talented Cast Prepares 'My Fair Lady'

(Continued from page seven)

Bev Slater, who will be remembered as the lovely Lady Thlang in 1980's "The King and I," will play Mrs. Eysenford-Hill. Bev has an extensive musical

background and has sung in many choirs and ensembles, as well as solo, in concerts and on radio and TV. She was a member of the Colorado Springs "Theatre Singers" for three years and the

U. of M. Choral Union for 10 years. Bev lives at Cedar Lake, Chelsea.

Ticket and Afterglow plans are being finalized and information regarding both is forthcoming.

# If you're over 21, own a home, and have a family... ...start clipping:

Your home, your savings, your investments, and all your possessions make up an estate that you'll want your family to have. Always.

Ann Arbor Trust can help you be sure of that.

Our Estate Planning service can minimize taxes and help you build your estate. And help build your family's future.

It's easy, affordable, and, best of all, it's something you can do now.

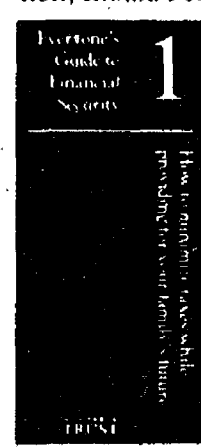


**ANN ARBOR TRUST**

"Everyone's Guide to Financial Security" series

Free Brochure/Free Initial Consultation:

☐ Yes, please send me a copy of Ann Arbor Trust's guide to Estate Planning: How to minimize taxes while providing for your family's future. I understand that there's no obligation and my initial consultation, should I choose one, is free.



Name \_\_\_\_\_  
Address \_\_\_\_\_  
City/State/Zip \_\_\_\_\_  
Phone \_\_\_\_\_

Call for faster service:  
**475-9154**

Mail to: Ann Arbor Trust Company 1478 Chelsea-Manchester Road Chelsea, MI 48118

**FREE INSPECTION**  
**of your furnace's heat exchanger!**  
FOR FURNACES 10 YEARS OR OLDER  
**It Could Be a Life-Saver!**

CALL

**STEELE BROS.**  
**HEATING & COOLING**

TOM JOHN  
475-1222 428-8692

Offer good thru June 30, 1982.

# 99¢

★ Egg McMuffin  
★ Hot Cakes and Sausage  
★ Scrambled Eggs, Sausage, English Muffin

You deserve a break today®

# BREAKFASTS

McDonald's®  
1535 S. Main, Chelsea  
Ph. 475-9620



## Alcohol Abuse Lecture Series Offered at CCH

These alcohol abuse programs continue to be offered to the public by Chelsea Community Hospital.

Programs are conducted by Dr. Kleanthous, M.D., medical director of the Substance Abuse Program at Chelsea Community Hospital.

The three remaining programs will be held on Monday, June 28; Monday, July 26; and Monday, Aug. 2. They will be held at 7 p.m. in the main dining room of

Chelsea Community Hospital. Subjects for the three remaining programs are Diagnosis of Alcohol Abuse; Alcohol Abuse in the Family; and Sexual Dysfunction in Alcohol Abuse.

The programs are open to the public and are free of charge, although registration is necessary.

Please call Cindy Bear at 475-1311 Ext. 354 or Shannon Miller at Ext. 225 to register.

## Jeffrey Bust Earns MBA At Dartmouth

Jeffrey D. Bust of Chelsea was one of more than 100 men and women receiving master of business administration (MBA) degrees from the Amos Tuck School of Business Administration at the 211th commencement exercises held at Dartmouth College Sunday, June 13.

The Tuck School is the nation's oldest school of business administration. It was founded in 1900 through a fund established by Edward Tuck, Dartmouth 1862, international banker and financier. It is a memorial to his father, Amos Tuck, Class of 1836, a member of Congress for 16 years.

Bust earned a B.S.M.E. degree from the U. S. Naval Academy in 1975. He graduated from Tuck with distinction and was an Edward Tuck Scholar.

He is the son of Mr. and Mrs. Thomas Bust of Chelsea.

## Funnel Cloud Reported from Silver Lake Area

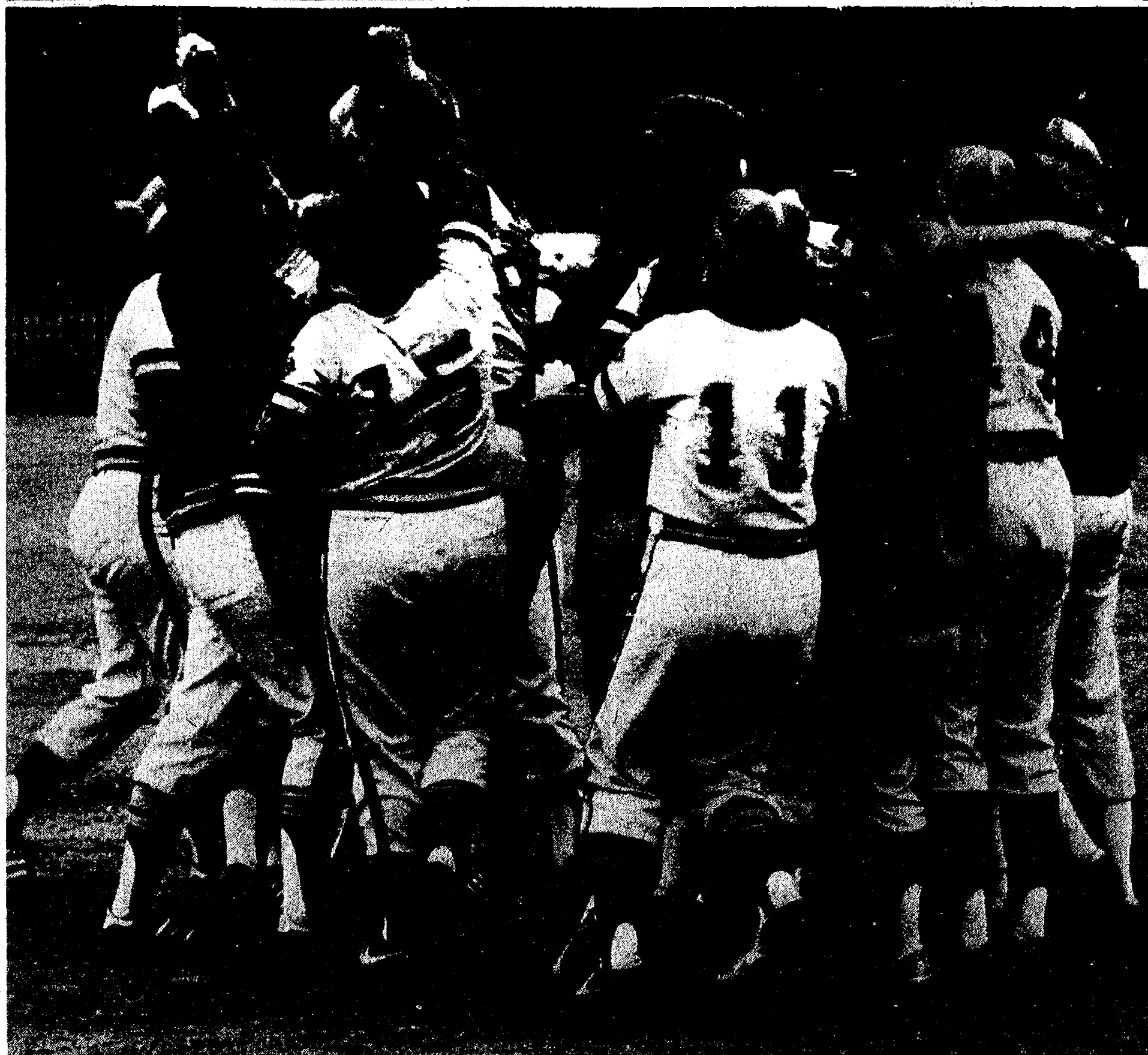
The National Weather Service reported tornado activity all over the state late Sunday evening. A tornado was sighted on the radar screens near Dexter at approximately 10 p.m. on Sunday. Reports placed the funnel cloud in the Silver Lake area. No damage was reported from any tornado or storm activity.

# The Chelsea Standard

Section 2

Chelsea, Michigan, Tuesday, June 22, 1982

Pages 9-16



**JUMPING FOR JOY** Wednesday, following their defeat of Richmond, Chelsea's lady Bulldogs celebrated their semi-final luck and hoped for similar luck Monday against West Branch Ogemaw Heights. And . . . they got it, defeating their opponents, 3-2, in 13 innings and securing a Class B State Championship.

**CLOSED**  
for  
**INVENTORY**

**Monday, June 28**

**Vogel's & Foster's**

## SCHNEIDER'S GROCERY

121 S. MAIN ST., CHELSEA

PHONE 475-7600

20-OZ. LOAF HOLSUM BUTTER TOP WHITE BREAD	79¢	10-OZ. PKG. ECKRICH SMOK-Y-LINKS	\$1.29
GRADE A EXTRA LARGE EGGS doz.	69¢	15 1/2-OZ. CAN. DEMING'S RED SOCKEYE SALMON	\$2.33
10-OZ. JAR MAXWELL HOUSE INSTANT COFFEE	\$4.09	9-OZ. CRTN. FROZEN KRAFT LA. CREME TOPPING	75¢
STICK-QUARTERS LAND-O-LAKES MARGARINE 2 lbs.	99¢	12-OZ. CAN FROZEN MINUTE MAID ORANGE JUICE	93¢
28-OZ. JAR OPEN PIT BARBECUE SAUCE	\$1.19	8-OZ. PKG. KRAFT PHILADELPHIA CREAM CHEESE	79¢

HOURS: 8-6 Mon.-Fri.  
8-4 Sat.

MEATS - GROCERIES - PRODUCE  
BEER - WINE - LIQUOR

## Primary Election Scheduled For County Commissioners

Washtenaw County's Board of Commissioners will have a total of nine members beginning in January. Primary elections will be held Aug. 10 in four of the nine

new districts, replacing the 15 district system used in the county for the past 10 years.

Twelve of 15 incumbent commissioners will seek re-election to the two-year terms. Districts affecting the Chelsea area are District I, which includes the townships of Lyndon, Sylvan, Lima, Sharon, Freedom, Lodi, Manchester, Bridgewater, Saline and York; and District II, including Dexter village, and the townships of Webster, Dexter, Northfield, Salem, Superior and most of Scio, except for the western most edges of Ann Arbor.

Seeking election in District I are three Republicans including Commissioner George Merkel, 53, of Chelsea. Seeking his third term, Merkel owns the Sylvan Hotel and is a general contractor. James R. Spears, 40, of York township, is president of Spears Fire and Safety Services in Ann

Arbor. He is in his third term as York township trustee. He is a member of York township's Board of Appeals and the executive boards of both the Milan and Saline area fire departments. Donald E. Limpert, 55, of Manchester is a general contractor with a special interest in restoring old buildings, 13 in the Manchester business district, including Black Sheep Tavern which he established in 1968 and owned until 1976.

District II candidates include Republicans Richard O. Brunvand, 44, of Whitmore Lake; Martin L. Straub, 27, of Dexter township; and Walter J. Walton, 56, of Webster township.

Brunvand is president of Whitmore Lake's Board of Education and president of Burnvand Associate, Inc., of Ann Arbor, a public relations and marketing firm. Straub is an engineer at the General Motors Proving Grounds

in Milford and was elected as a Dexter township trustee in 1980 while Walton is a retired Wayne County Sheriff's Department sergeant. He was a Democratic candidate for the county board in 1978 and 1980 against retiring Commissioner Floyd Taylor.

Democrats seeking election in District II include Thomas E. Carey, 37, of Superior township and Robert E. O'Connor, 52, of Northfield township. Carey is a cancer researcher at the University of Michigan who was designated by the Jaycees in 1981 as one of the 10 outstanding young men in America for his research work. He is also the founder of the Superior township Jaycee chapter.

O'Connor is an attorney who sought the Democratic nomination for the county Board of Commissioners when that body was formed in 1968.

Money in the hand is fine---  
Money in a 91 Day Certificate  
with us is smarter!

# CSB CHELSEA STATE BANK

Member F.D.I.C.

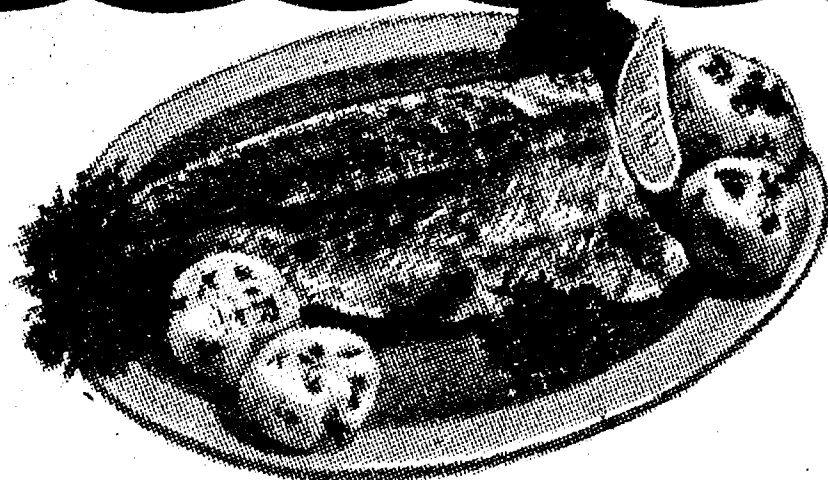
Phone 475-1355

Main Office  
305 S. Main

Branch Office  
1010 S. Main

The new 91 Day Time Certificate of Deposit pays a high annual rate of interest. Interest rate is based on the T-Bill and changes weekly, but holds firm from date of purchase to maturity. Minimum deposit is just \$7,500. This new 91 Day certificate along with all your funds on deposit here is insured for a full \$100,000 by the Federal Deposit Insurance Corporation. Make your savings count in a 91 Day Time Certificate of Deposit with us.

Federal regulations prohibit the compounding of interest during the term of deposit and a substantial interest penalty for early withdrawal.



## FISH SPECIAL

MONDAY THRU THURSDAY

Through July 6 we will offer

## FRESH WHITEFISH

at special price of \$5.95

Dinner Includes  
Garlic Toast & Butter  
Relish and Salad Table  
Choice of Potato

Also featuring a nightly dinner special  
at a special low price.

# Schumm's

FINE DINING

1620 M-52, CHELSEA

PHONE 475-2020



# SPORTS



**TIE BREAKER:** Maggie Sweet slides toward home plate to break a 1-all tie between the Bulldogs and their Richmond opponents Wednesday in the continuation of Tuesday's rain-delayed game.

Chelsea came out on top, 4-3, and faced Ogemaw Heights Monday for the state championship.

## Big Boy Softball Team Makes It 9-0

Chelsea Big Boy's softball team tacked up another win on the league slate by defeating Portage Hardware, 7-3, Thursday night. The victory put Big Boy at 9-0 and Portage was handed its ninth consecutive loss in league action.

Tuesday night's games were washed out by the thunderstorms. Big Boy continues to hold its three-game lead over second place Central Cafe, Central won its game Thursday, keeping pace with Big Boy. In Chelsea's victory, Bob Moffet had two hits and drove in two runs. Roger Bourne also had two hits and drove in a run and Randy Brier also had two hits. Portage Hardware tied the score at 3-3 in the third inning, but Big Boy scored two in the fourth and two more in the fifth to take command.

John Strong got his ninth win of the year, and sixth in league play.

He pitched five innings before giving way to Jim Strong, who mopped up the final two innings with hitless relief work.

Big Boy faces Omega Farms tonight, June 22 at 8 p.m. Thursday evening's game will be against Brewer's Gulf and that starting time will be at 6:15 p.m. All games are played at Vet's Park in Ann Arbor.

### STANDINGS

	W	L
Chelsea Big Boy	9	0
Central Cafe	6	3
Brewer's Gulf	4	5
Wolverine Supply	4	5
Omega Farms	4	5
Portage Hardware	0	9

Please Notify Us  
In Advance of  
Any Change in Address

## Pony League Results

### Cardinals 1, Royals 0

Chan and Dave Lane's Cardinals played a tough Pony League game Monday night, defeating Don Thibideau's Royals, 1-0.

The game was scoreless up to the fifth inning and each team stranded many men on base. Then, Todd Starkey hit a long home run for the Cardinals to break the tie.

The Royals tried to score in the sixth with bases loaded and no outs, but good pitching by Starkey and catching by T. Lewis and S. Darrow shut down the attack. Jeff Harvey also pitched and combined with Starkey for a 17 strike-out performance, only giving up one hit to the Royals' Greg Boughton, who pitched their entire game and only gave up two hits.

### Pirates 8, Orioles 0

Dennis Petsch's Orioles had a rough time starting their big orange machine as Dan Murphy's Pirates demolished them, 8-0.

The Pirates started by scoring two runs in the first inning. C. Murphy, R. Spencer and R. Hafley each had singles. Then, in the fourth, R. McDowell homered with two on. The Pirates then scored three more in the sixth.

R. Spencer did an excellent job pitching, only giving up one hit, a bunt single by Oriole Jordan Gray, who was then cut down at the plate trying to steal home.

T. Klink finished up pitching for the Pirates, getting the Orioles out 1-2-3 in the fourth, fifth and sixth innings.

### Astros 4, Tigers 3

Tom Kemp led his Astros to a 4-3 victory over Jim Patterson's Tigers though the game began with both teams scoring a run in the first inning.

Then, in the fifth inning, the Tigers scored two runs. Hitting singles were O. Wilcox, P. Patterson, G. Halst (2) and M. Skiff.

The Astros came back with one run in the fourth and two runs in the fifth. Hitting singles were Merkel and Lawton, while Bohlender hit a double and Ahrens and Girard each hit triples.

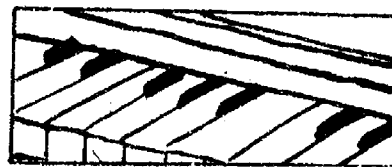
Defensively for the Tigers, Greg Halst and Ron Johnson teamed up with great pitching. M. Skiff did some fine catching while R. Niethammer made a great catch in the outfield. Stopping the Tigers were M. Merkel with four put-outs and D. Girard with a line drive double play. M. Kemp and R. Ferry combined for 12 strike-outs.

### Cardinals 9, Orioles 6

Chan and Dave Lane's Cardinals continued to win on Wednesday night as they defeated Dennis Petsch's Orioles, 9-6.

The Cardinals scored in all five innings, never letting the Orioles get ahead. Hitting singles for the Cardinals were W. Lewis, S. Darrow, T. Lewis (2), T. Starkey, M. Westover and Bob Clouse. Hitting back-to-back-homers were J. Harvey and S. Darrow. Ken Beauchamp and S. Freysinger held long-hit balls to two triples instead of home runs.

Hitting for the Orioles were J. Cattell, M. Poljan, M. Mitchell and R. Hubbell, with singles. Poljan and Hubbell also hit triples and Hubbell hit a home run. T. Starkey, B. Clouse and J. Harvey combined for 12 strike-outs against the Orioles. This win put the Cardinals on top with two wins and no losses.



To clean piano keys, apply toothpaste to a well dampened cloth. Rub the keys well, wipe dry and buff with a dry soft cloth.

**Boost Your Herd's Weight Gains With Staley® Sweetlix® Rumensin® Blocks**

- Improves Nutritional Value of Most Forage
- Promotes Faster, More Economical Weight Gains
- Excellent for Weaned Calves and Yearlings
- Self Controlled Consumption
- Includes Important Vitamins and Minerals

We carry a complete line of these and other Economical Sweetlix Blocks.



**McCALLA FEED SERVICE**

CHELSEA, MICHIGAN 48118



## Midget, Jr. Miss Softball

### Yellow Jackets 12, Blue Bandits 4

In Midget baseball action Monday, June 14, the Blue Bandits forfeited the game after four innings due to a lack of players. Final score, 12-4 in favor of the Yellow Jackets.

Collecting singles were Vicki Bullock with two, Laura Comeau (2), Sarah Grau (2), Heather Keane (3), Carol Hahnke (1), Kristen Clark (1) and Becca Burkell (3).

Doubles were hit by Colleen Scharphorn and Lisa McGilgren with two each and Sarah Grau chipped in with one. Laura Comeau also hit a home run for the winners.

Highlight of the contest was Becca Burkell's outstanding catch in shallow left field.

### Green Giants 7, Purple Panthers 6

Monday found these two teams tied in the sixth inning. But, after the deciding run was scored on a hit by Charity Strong, the game was called.

Collecting singles for the Purple Panthers were Shawn Losey, Jill Cook, Sara Musolf, Sheri Stevens, Carrie Flintoft while Jill Cook and Shawn Losey hit doubles as well. Heidi Boyer hit a home run and a triple while Kim Ritter had two home runs for the Green Giants.

Purple Panther Shawn Losey caught two pop flies in the game while Giant Carl Thurkow caught two pop flies as well.

### Purple Hearts 14, Stokers 10

These two teams took to the field Monday as the Purple Hearts took an early lead and hung on to defeat the Stokers, 14-10. The girls played a well executed game both in hitting and fielding.

Collecting singles were Kim Ferry, Dawn Weatherwax, Dawn Thorne, Kerry Henderson, while Shannon DuRussel, Kerry Henderson, Kim Ferry, Kelly Kuzon and Michaela Scripser each hit doubles. Dawn Weatherwax also hit a triple while Kim Ferry hit a big home run.

At third base, Paula Kuzon tagged out a runner in the second inning while Michaela Scripser, in left field, caught a fly ball and threw out a base runner returning to first base. This occurred in the third inning.

For the Stokers, a fine double play was turned in as a ball hit to right field was sent to second baseman Chris Basso and relayed home to catcher Trisha Mattoff for the first out while

Donna Bruck got the ball back to first for a second out.

Karen Michaud also caught an important pop fly in right center field. Beth Peterson and Tana Hermosillo gave fine base-running performances.

### Green Giants 15, Yellow Jackets 2

The Green Giants dominated the game as Carl Thurkow and Kim Ritter each hit home runs. Another highlight in the contest Wednesday were Thurkow and Ritter each catching pop ups.

Though the Yellow Jackets scored twice in the first inning, they were held scoreless throughout the remainder of the contest. The Green Giants, however, were strong throughout.

### Purple Panthers 9, Smurfettes 4

With a total of 18 hits collected, the Purple Panthers pulled off a 9-4 win over the Smurfettes Friday. Contributing to the win was Heidi Boyer's home run and Sherry Stevens, collection of two pop flies.

Sarah Musolf made a spectacular double play.

### Indians 20, Stokers 13

In Junior Miss action last week, the Stokers lost to the Indians, 20-13. A key play in the contest was Jenny Pichlik's pitching and her seven strike outs. Allison Chasteen hit a double as well and Donna Bruck hit a home run in the fourth inning. Susan Cooper also made a spectacular catch in right field.

### Blue Bombers 15, Bluejays 9

These two evenly matched teams fielded well and played hard this week with Bomber Vanessa May hitting a home run. Pitching were Pam Brown and Karen Grau for the winners.

### Bombers 18, Indians 10

Monday's Jr. Miss action found the Bombers defeating the Indians, 18-10. The Bombers took the lead early and hung on throughout the game.

Player of the game for the Indians, Allison Chasteen, was two for two and scored both times while Debi Koenn made an excellent bunt.

Jenny Pichlik gave an excellent pitching performance, striking out five, while relievers

included Kim Collins and Alisa Dorow.

For the Bombers, Sallie Wilson, Stacey Murphy, Pam Brown, Sarah Schaeffer, Vanessa May and Kris Michaud offered good bunts while Lau Walton hit two triples. Deana Slusher and Karen Grau each hit doubles.

According to Coach Lynda Longe, excellent pitching was given by Cela Murphy, Pam Brown and Karen Grau while Heather Neibauer made an excellent fly ball catch in the fourth inning. Kim Easton also contributed some fine defensive short-stopping.

### Gummy Bears 18, Blue Jays 17

This contest was tight until the final inning, as the Gummy Bears collected four home runs as compared to the Blue Jays' 17.

Hitting singles for the Bears were A. DeFant, K. Ghent, J. Ghent, Brenda Kenney and K. Anderson while L. Torres hit single for the Jays. Laura Torres also hit a double as did Blue Jay companion Beth Paddock. Collecting a triple was Amy Dmoch of the Bears while teammate Kelly Ghent hit a home run in the third inning.

Defensively, Beth Kenney, playing as catcher, threw out a runner at second base.

### Purple Hearts 28, Angels 1

The Purple Hearts were in total control of this contest, taking a very convincing 28-1 victory from the Angels.

Hitting singles were Paula Kuzon, Kim Ferry, Malinda Polzin, Michaela Scripser, Kerry Henderson and Kelly Kuzon while Dawn Thorne, Dawn Weatherwax, Paula Kuzon and Kim Ferry hit doubles. Triples were hit by Kelly Kuzon and Dawn Thorne and Kelly Kuzon also hit a home run.

Superb catching was handled by Kim Ferry and Kelly Kuzon while pitching duties were shared by Dawn Weatherwax and Paula Kuzon.

**D. C. CHIMNEY SERVICE**

9823 Duster-Parkway Rd.  
Peachtree, Mich.

878-6207  
475-8503

**JUNIOR GOLF LESSONS**

at  
**INVERNESS COUNTRY CLUB**

Ages 6 - 16  
**JUNE 28-29-30, JULY 1-2**

8:30 a.m. to 2:30 p.m.

To register, call the Pro Shop  
475-8746 - 8 a.m. to 7 p.m.

**MARK POLICHT, Golf Director**

**VILLAGE MOBIL**

is proud to announce  
that they now have

**LP GAS**

and can fill your barbecue  
or camper gas containers,  
motor homes, travel trailers.

OPEN 24 HRS.  
7 DAYS A WEEK

Stop in and try our  
**CONVENIENCE STORE**

ATTENTION FISHERMEN: We now have  
worms and night crawlers for bait.

**VILLAGE MOBIL**  
1629 S. MAIN ST., CHELSEA  
(M-52 at I-94)

Introducing  
**FAN-TASTIC FAN DAYS**  
JUNE 25th-26th - 9 a.m. to 9 p.m.

**Many Fans at 50% Off** Sug. Retail

We have the largest selection of fans in Michigan

Keep cool this summer  
with a ceiling fan  
that you design!

See Our New  
**CEILING HUGGER FANS**

Takes only 7 1/2 inches headroom. Perfect for mobile homes and low ceilings.

REG. \$369  
**OUR PRICE \$199**

**SUPER VALUES**

**FREE DOOR PRIZES**

Take advantage of the Hunter Rebates.  
Get your fan at  
**35% OFF**  
and get up to  
**\$35 REBATE**  
from Hunter.

All Hunter fans discounted 35% for these two days only.

**100's of FANS at DISCOUNT PRICES!**

**MYER'S HEAT & SPECIALTY SHOP**  
719 E. Main, Stockbridge Ph. (517) 851-8434  
MASTERCARD AND VISA WELCOME  
OPEN 9-5 Mon. - Sat.



## Swim Lessons Offered All Ages

The Charles S. Cameron Pool at the Beach Middle school is once again offering its immensely popular summer learn-to-swim lessons. The lessons provide youngsters from infancy up to the opportunity to receive instruction in swimming and water safety.

First of three sessions offered this summer is now coming to an end and more than 110 children have improved their swimming skills.

The next session starts Monday, June 28 and will conclude Friday, July 9. Then the final session will be offered from July 12 to July 23.

Cost of these lessons is \$15 for residents and \$22 for non-residents. The classes range in size from 3 to 8 swimmers per instructor.

### Second Section Added to Youth Swim Program

Chelsea Recreation Council reports that its summer swimming program for youngsters ages six and up has added a second meeting time for Sessions II and III. In addition to the 10:30 a.m. to 11 a.m. meeting time, a second time, from 12:30 p.m. to 1 p.m., for Session II (June 28 to July 9) and Session III (July 12 to July 23).

Fees for these swimming lessons are \$15 per resident participant and \$22 for non-residents. Registration may be completed at the Community Education office until the first day of class. Thereafter, all registrations must be performed at the pool.

structor with all ability levels included. The instructors are now working for their fourth and fifth years in succession in the program. They include Shelly and Shannon Springer, Sara Borders, and Craig Wirtz with diving instructions. Private lessons are also available at an extra charge. Those interested should contact the instructors at the pool for costs and times.

Recreational swims are also being offered at the pool Monday-Friday at 1:30 and Monday, Wednesday, Friday from 8-9 p.m. and on Saturdays from 2:30-4 p.m.

The Chelsea Aquatic Club is still offering new memberships to Chelsea Residents at 50% off cost.

For further information call the pool at 475-1425 or Larry Reed at 475-9433.

## School Board Briefs

The regularly scheduled 8:00 p.m. Board of Education meeting Monday, June 14 was preceded by a 7 p.m. public budget hearing to review the 1982-83 budget.

Present: Feeney, Schumann, Heller, Grau, Comeau, Snyder, Superintendent Van Meer, Assistant Superintendent Mills, Principals Williams, Conklin, Wojcik, Benedict, Assistant Principal Vogel, Community Education Director Rogers, Athletic Director Nemeth, guests.

Meeting called to order at 8:15 p.m. by President Ann E. Feeney.

Board approved the minutes of the May 26, 1982 meeting.

President Feeney entered complimentary communications from David Curtis, Dorothy Thodeson, and Florence Hakala, which spoke specifically to the Exemplary Employee Awards Luncheon.

Superintendent Van Meer acknowledged a communication from the Chelsea Community Hospital Administrator which would add an addendum to the contract between the Chelsea School District and the Chelsea Community Hospital for the rental of two classrooms for a pediatrician's office.

Superintendent Van Meer indicated that negotiations with the Chelsea Education Association would resume on June 28.

The Board adopted a budget for the 1982-83 school year with expenditures of \$6,974, 981.

## Little League Results

Indians 6, Angels 3

Stan Morseau's Indians took a fast lead in the opening week of Little League action as Jr. Morseau hit a two-run homer in the first inning. This led to a third inning rally when Rick Finch, Rob Finch and Jr. Morseau each hit triples and Brian Paddock, Scott Landrum and Herry Rhinehardt each hit a single to score four more runs.

However, for Larry Nix's Angels, Jeff Prentice was the big bat, getting a single and a home run. Scott Guyer pitched well for the Angels with Luman Strong doing a great job at gunning down Jr. Morseau at third base while Terry Draper made a superb catch in the outfield.

Defensively for the Indians, Jerry Rhinehardt, Jason Schutte and Rick Finch combined to keep the Angels' many rallies scoreless.

Blazers 16, Yankees 1

Phil Wels' Yankees had a tough start last Monday when Bruce Hansen's Blazers pounded them, 16-1. Todd Ferry started for the Yankees and was relieved by Robert Thorne, Matt Hubal, Mike Hodgson and Jeff Kleiwaser. Each did an outstanding job in defense.

However, the Blazers' bats were blazing. L. Beeman and R. Lyerla each had a home run. J. Patterson and M. Motzinger had triples and C. Maynard had a double. Hitting singles were J. Patterson, M. Molsinger, C. McCalla and R. Lyerla with two.

The Blazer pitching was also hot with J. Patterson, M. Forner, and C. Maynard on the mound.

Royals 9, A's 7

Stan Starkey's Royals took a commanding lead and went on to defeat Fred Zuehlke's A's, 9-7. The A's played hard and hit the ball well with K. Bell, C. Zuehlke, M. Chasteen, and M. Schwegler all hitting singles. Randy Dale followed with a run-scoring triple but was them cut down at the plate by the Royals' M. Herter, C. Starkey and T. Byers. R. Nye played well at second, having assisted on a double play. C. Starkey and J. Collins added singles to the Royals' attack while C. Zuehlke kept the rest of the Royals down with six strike outs in the third inning.

Angels 15, Tigers 5

Larry Nix's Angels bounced back to defeat Ken Larson's Tigers, 15-5. J. Prentice and D. Wingrove hit doubles while L. Nix hit a three-run homer for the Angels. D. Wingrove pitched three excellent innings only giving up three runs.

Hitting singles for the Tigers were M. Larson, S. Williams (with two), and E. Frisinger. M. Larson also had a double. P. Hassett made an excellent catch in the outfield to end a scoring drive by the Angels, who scored in the first four innings. Nevertheless, the Tigers held them back in the fifth inning.

### Chelsea Woman's Son Completes Navy Recruit Training

Navy Seaman Recruit David A. Stephens, son of Grover Stephens of 239 N. Dwight St., Jackson, and Peggy Salyers of 19 Chestnut Dr., Chelsea, has completed recruit training at the Naval Training Center, Orlando, Fla. Included in their studies were seamanship, close order drill, Naval history and first aid. Personnel who complete this course of instruction are eligible for three hours of college credit in Physical Education and Hygiene.

The Board approved the purchase of two textbooks for use in Child Care and Marriage and Family classes. Previous approval of textbooks did not include these publications.

The Board voted to grant permission for district administrators to receive gifts on behalf of the school district valued at \$1,000 or less, which gifts will be formally recognized by the Board of Education at a later meeting. Additionally, the Board of Education must approve acceptance of gifts to the school district valued at \$1,000 or more.

Assistant Principal Vogel indicated that driver education had started and that automobiles had been received from Harper Pontiac, Palmer Ford, and Village Motors.

Principal Williams indicated that the girls softball team would be playing in the semi-finals of the state tournament at Chelsea against Richmond on Tuesday.

Meeting adjourned at 10:30 p.m.

## BOWLING

Chelsea Family League

Standings as of June 16

Pack-Man	31	11
Clark Bars	31	11
Good, Bad, Uglys	29	13
All Stars	27	15
Three & One	24	18
Family	23	19
Chie's Crew	23	19
Double A's	23	19
3 Strikes & A Spare	22	20
Little Rascals	22	20
Four T's	21	21
MADD	18	26
Energizers	15	27
Red Sox	14	28
Star Bowlers	8	34

Children 25 pins over their average: D. Adams, 118; L. Taylor, 123; D. Bable, 128; T. Bush, 141; M. Workman, 150; C. Hegadorn, 162; T. Weis, 167; J. Packard, 180.

200 games and over: G. Packard, 202; J. Harook, 204; D. Clark, 206; E. Greenleaf, 221; J. Nye, 202, 234.

Women, 450 series and over: D. Taylor, 450; V. Wurster, 465; K. Greenleaf, 481; T. Greenleaf, 489; T. Harook, 489.

Men, 500 series and over: E. Greenleaf, 549; D. Clark, 563; J. Harook, 579; G. Packard, 591; J. Nye, 636.



GRABBING A HOT GROUND, Donna Popovich, in deep short, winds up to make the long throw to first base during semi-final softball action against Richmond Wednesday. Tied 1-1 when the game was rain-delayed Tuesday, Chelsea managed to pull off a 4-3 win in extra innings to take up with West Branch Ogemaw Heights Monday in Class B state finals action.

**DIAMOND GLASS & FEINER'S**  
2350 W. Liberty  
Ann Arbor, MI 48103

- ★ Auto Glass
- ★ Glass & Screen Repair
- ★ Mirrors
- ★ Aluminum Doors & Framing
- ★ Shower Enclosures
- ★ Insulated Glass Units (SPECIAL SHAPES & SIZES)

**MIKE WALTON, Owner** 769-2722

Subscribe to The Chelsea Standard

## SERVING SANDWICHES

from 11:00 a.m. till 2:00 a.m. Mon. thru Sat.

BEER & WINE CARRY OUT FOOD CARRY OUT

Open Sunday, 12:00 Noon Till 11 p.m.

## MARK IV LOUNGE

1180 M-52 Phone 475-1951 Chelsea

# Back By Popular Demand!

# BOWL FREE

With any purchase at Chelsea

**McDonald's**

1535 S. MAIN ST., CHELSEA

Thru July 15 you will receive a

## TICKET FOR 1 FREE GAME OF BOWLING

USEABLE WITH 1 PAID GAME (NON-TRANSFERABLE)

At the time you bowl, present this FREE ticket and receive a second game FREE at

# CHELSEA LANES

1180 S. MAIN ST., CHELSEA  
PHONE 475-8141

**AGRI-BUSINESS**

That's a dressed up name for the hard work of farming. There's no fancy name for what A&L does, though.

We keep the parts and equipment you need for your agri-business truck — on hand — in stock — ready right now for you!

## A&L FLEET SUPPLY

— A DIVISION OF A&L PARTS, INC. —  
For 64 years, a Michigan leader in truck parts & equipment

524 South Main Ann Arbor 313/665-4411

# FRANK GROHS

## CHEVY

### BUY NOW! SAVE NOW!

## Up to \$600 REBATE on 1982 CHEVROLETS

**CLASSIC 1964 CHEVELLE CONVERTIBLE**  
Showroom New! \$3895

**1980 CUTLASS Supreme Brougham Diesel**  
Magnificent and Loaded

**1979 CHRYSLER LeBARON 2-Dr.**  
Loaded with options.

**1976 BUICK LeSABRE 4-Dr.**  
p.s., p.b., air

**1980 CHEVETTE**  
4-dr., A.T., 4-cyl., AM/FM

**1978 BUICK LeSABRE**  
2-dr., auto, p.s., p.b., air.

**1980 CHEVETTE**  
2-dr., 4-spd., AM/FM, W/W CLEAN!

**1977 OLDS CUTLASS SUPREME**  
Bucket seats, air, stereo

**1976 MONTE CARLO Landau**  
Auto, air, stereo, tilt.

## TRUCKS & 4x4's

**1974 GMC JIMMY 4x4**

**1979 CHEVY**  
½-T, Big 10, V-8, auto., p.s., p.b., 33,000 mi. lwb. Don't Miss This Beauty!

## TRANSPORTATION SPECIALS

★ '74 DUSTER  
6-cyl., std. trans.

★ '75 FORD WAGON

★ '74 IMPALA 4-dr.

★ '73 MONTE CARLO

★ '75 MAVERICK  
Grabber 6-cyl., auto.

## NEW TRUCKS

1982 1-Ton Cab & Chassis  
60" Cab to Axle

1982 1-Ton Cab & Chassis  
84" Cab to Axle

S-10s Available

SEE  
FRED KLING  
or JEFF GROHS

## OPEN

MON.-FRI. .... 9-6  
WED. .... 9-8  
SAT. .... 9-1

**Frank Grohs Chevrolet**  
DEXTER, MICH.  
**426-4677**



Ad  
Taken  
Until  
10 a.m.  
Monday

# PUT IT IN THE MAIN ADS FOR RESULTS

Just  
Phone  
475-1371

## Automotive 1 PALMER FORD

### BEST BUY FOR YOUR DOLLAR

1973 PLYMOUTH WAGON	Good transportation	\$795
1973 FORD F-100	Nice truck	\$1995
1976 PINTO WAGON	Squire Model	\$1995
1974 MONTE CARLO	A real beauty	\$1995

### We Buy Used Cars & Trucks

1975 GRAN TORINO BROUHAM	One of a kind	\$2495
1977 FORD F-250	Good work truck	\$2495
1976 GRANADA 4-dr.	Priced to sell	\$2795
1976 CUTLASS SUPREME	White and right	\$2995

### Michigan's Oldest Ford Dealer

1978 THUNDERBIRD	Locally owned	\$3695
1980 PINTO 2-Dr.	Gas miser	\$3995
1979 FAIRMONT 4-Dr.	Locally Owned	\$3995
1978 COUGAR XR7	A black beauty	\$4495
1980 FAIRMONT 4-Dr.	Roomy, comfortable	\$4695

1979 THUNDERBIRD	Priced right!	\$4695
------------------	---------------	--------

### Buying, Selling and Leasing Since 1912

1981 MUSTANG 3-door	Sporty gas miser	\$5995
1980 MUSTANG 3-Dr.	Sport Model	\$4995
1979 FORD	Stake body	\$4695
1977 THUNDERBIRD	Town Landau	\$5595
1981 FAIRMONT 4-Dr.	Only 6,000 miles	\$5995
1980 FIREBIRD	Super sharp	\$6495

### We Buy Used Cars & Trucks At Michigan's Oldest Ford Dealer

## PALMER FORD

Used Car Lot Open  
Mon. & Thurs. 9:00  
Saturday Till 1:00  
CHELSEA 475-1800

### BODY SHOP

COMPLETE-FULL TIME  
Estimates Available

## PALMER FORD

222 S. Main 475-1301  
FOR SALE — 4 15"x8" slotted E.T. wheels. Unlugg with locks. \$100. Ph. 475-1371 9-5, ask for Steve. x48H  
1981 PONTIAC PHOENIX LJ hatchback, loaded. Call 662-6636 or 878-6489, evenings. x50H

## Classified Ad Order Blank

Mail Your Copy to The Chelsea Standard

P. O. Box 340, Chelsea, Mich. 48118

Name \_\_\_\_\_  
Address \_\_\_\_\_  
City \_\_\_\_\_

Ad is to appear week of \_\_\_\_\_ number of weeks \_\_\_\_\_  
in The Chelsea Standard \$ \_\_\_\_\_  
and or \_\_\_\_\_  
The Dexter Leader \$ \_\_\_\_\_ Charge Ad

Total Enclosed \$ \_\_\_\_\_

Please run ad under the following Classification \_\_\_\_\_  
(Please type your ad copy to avoid errors)

Ad Rates: 10 words or less—\$1.00 (paid in advance). Over 10 words, 7¢ per word.

Complete group of figures for phone number and address each count as 1 word; each abbreviation counts as 1 word... you don't save money by abbreviating and you make your ad harder to read.

**The Chelsea Standard**  
Phone (313) 475-1371

## Automotive 1

1968 CHARGER — 1280 Ridge, Ph. 475-7495. Many extras, re-worked. x3

## Motorcycles 1a

1980 KAWASAKI K2250LTD street bike. Excellent condition. \$950. Ph. 475-2079 or 475-2882. x3-2  
1973 YAMAHA Enduro. 3,900 miles. Excellent condition. \$500. Ph. 475-2834. x3  
YAMAHA 650 Special II — 3,500 miles, mint condition, \$1,700. Ph. (313) 851-8346, after 4:30 p.m. x4-2  
72 SUZUKI GT-550, blue, good condition, 3 cycle, ram air system. Ph. 475-3325. \$500. x3

## Farm & Garden 2

GEHL Model 72 Hall green chopper. Ph. 429-9634. x4-2  
STANDING HAY wanted. Also, wheat and oat straw in windrows. Cash paid in advance. Ph. (517) 764-0700. x7H

## GARDEN VIEW GREENHOUSE

5505 M-52 South  
Just 4 miles south of I-94  
Ph. 475-2791

Flowers — Bedding Plants — Cabbage  
Seed Potatoes — Head Lettuce  
Onions — Cauliflower x47H

BLACK DIRT AND PEAT — tested and proven excellent for lawns, gardens, flower beds; 6 yards delivered, \$40. Guaranteed satisfaction. Ph. 428-7784 or 428-9578. x5H

## RIDING MOWER

FOR SALE  
Brand New  
8 h.p. horse 26" cut.  
\$350  
Call 475-2828 x1H

STRAWBERRIES, for sale — Picked or you pick. Ph. 475-2602. x3-2  
STANDING HAY wanted. Ph. 475-2771. x9-9  
COMBINE — John Deere, 45, Self-propelled with two-row corn-picker head. Parts or repaired. Ph. (313) 428-7573. x3  
CUSTOM COMBINING — Any size acreage. Ph. 475-2403. x4-2

## Recreation Eqpt. 3

MOBILE HOME — Coachmen, 14'x70", \$8,500. Many extras. Ph. 475-1553 after 3 p.m. x3-2

## For Sale 4

UNICYCLE, Schwinn, \$50. 3-speed women's bicycle, \$50. Violin, complete with case, appraised at \$250, asking \$190. All items in excellent condition. Ph. 475-7550. x3  
SIGNET OBOE, \$495. Good condition. Ph. 475-8468. x3-2  
RABBITS FOR SALE — Live or dressed. Ph. 475-7462. x3-2

FOR SALE — 2 225-gallon oil tanks, \$50; 1 Sears oil space heater, \$50; 1 trailer hitch for Dodge, '71-'81 vans, \$40; 1 guitar and case, (short neck for children), \$45; 1 quartz heater, new, \$60. Ph. 475-7659. x3

FOR SALE — Velvet couch, gold; rocker, olive green. Some wear. Ph. 475-2805. x3

3 CEMETERY LOTS at Oak Grove Cemetery. Lots 47, 49 and 50, south block 40. Call (517) 536-8404. x3

FIREWOOD by semi-load, \$950. Ph. 426-4352. x6-4

FOR SALE — 2 washers, 2 dryers; 22" gas stove, slide-in type; 2-oven 30" gas stove; 3 bathroom vanities, 2 31" and 1 37" tables and chairs, wood; odd chairs. Lots of other items. 1/2-ton camper with floor, \$200. Lots of other items. 7997 Grand, Dexter. 426-3355 persistent. x3

## For Sale 4

SEE US for transit mixed concrete. Klumpp Bros. Gravel Co. Phone Chelsea 475-2830, 4920 Loveland Rd., Grass Lake, Mich. x40H

WEDDING STATIONERY — Prospective brides are invited to see our complete line of invitations and wedding accessories. The Chelsea Standard, 300 N. Main, Ph. 475-1371. x8H

COUNTER TOP RANGE — for sale — Sparkling white ceramic, 4 burners, electric, easy cleaning, like new. Phone 475-9414 evenings after 6 p.m. or anytime week-ends. x32H

FIREWOOD — Semi or partial loads. 4'x4'x100" federal cords. Seasoned available. Please call 426-8578. x4-5

SELMAR Bundy Tenor Saxophone — \$300. Call 475-7271. x3-2

FOR SALE — Ward's Airline stereo console with tape deck, record turntable and dust cover. Excellent condition. \$175. Ph. 475-2079 or 475-2582. x3-2

## BUILDERS

For \$12,600 you can pour your own basements and other people's, too. I have a complete set of SIMPLEX POURED WALL FORMS, for sale. Everything you need to go into business. Call

## WEBER HOMES

475-2828 475-2734 44H

## Auction 4a

SHERIFF'S AUCTION  
Date: June 29, 1982  
Time: 10 a.m. to 12 noon.  
Place: Bill Martin Towing, 65 Emerick, Ypsilanti, Mich.  
Vehicle: '78 Mercury. VIN 8T20Y750101. x3

## Garage Sale 4b

MINI BUT MUCH! garage sale Saturday, June 26, 9 to 3. 354 Washington. x3

DALLAS CORNER TRADE MART — Permanent indoor and outdoor clean air-conditioned. Free parking and admission. Dealers welcome. Ph. (313) 242-6284, Monroe, MI. x3-4

RUMMAGE SALE — St. John's United Church of Christ, Francisco, June 24-25, 9 a.m. to 5 p.m., 270 Bohne Rd. x3-2

YARD SALE — 428 W. Middle, Friday and Saturday, June 25 and 26, 10 to 4. Lots of paperbacks, kids clothes and miscellaneous. x3

GARAGE SALE — June 25-26, 9 to 4, 13940 Old US-12 East. Rototiller, small trailer for tractor, many misc. items, antiques, priced to sell. x3

GARAGE SALE — 128 Lincoln, Chelsea, June 25 and 26, 9 to 5. 5-Family: Children's and adult's clothes, hi-fi, dresser, couch and lots more of everything. x3

4-FAMILY GARAGE SALE! Lots of furniture, clothes, dishes, books, etc. June 25 (5 to 8 p.m.) -26, (8 to 8 p.m.) 20550 Scio Church, Chelsea. (1/2 mile East of M-52) Rain or shine! x3

3-FAMILY GARAGE SALE — June 25 and 26, 9 to 5. Golf clubs, tapes, games, drums, bowling ball, boots, clothes and much, much more. 20976 Waterloo Rd., off Werkner. x3

2-FAMILY YARD SALE — Furniture, children's clothes 2-4, men's clothes extra large, Tupperware, tarp, misc. June 24-25-26, 128 Van Buren, Chelsea. x3

GARAGE SALE — June 25-26, 514 Arthur. Clothes, toys, dishes, folding doors, glassware, some small appliances. x3

GARAGE SALE — June 26, 10 to 6, 7517 Mester Rd., off Waterloo. x3

YARD SALE — June 25-26, 9 a.m. to 5 p.m. Magnus organ, stereos, mower, kids clothes, good misc. 20180 Old US-12W. x3

GARAGE SALE — 737 S. Main. Antique chair, rocking chair, coffee-table, girl's clothing, pick-up tool box, bike, household items and much more. Thurs., Fri., Sat., June 24-25-26, 9 a.m. to 4 p.m. x3

OUT OF THE ORDINARY garage sale. Many pretty, unusual, practical items for family, home, recreation. Antiques, collectibles, yard goods, clothing-bags 18 mo./2, girls 12/12x. More. Friday, June 25, 9-7, 1427 S. Fletcher 2 mi. south of I-94. x3

3-FAMILY YARD SALE — June 25 and 26, 9 to 6. Toys, clothes sizes 1 to 2, plant stands, table and chairs, lots more. 12085 Jackson Rd. x3

GARAGE SALE — 19800 Cavanaugh Lk. Rd., June 24-25, 10 a.m.-4 p.m. Women's large size clothes, children's, coats, hub caps, household items, much miscellaneous. No early sales. x3

4-FAMILY GARAGE SALE — Dishes, clothing, furniture, and much more. Thurs., June 24 and Fri., June 25, 9:30 till 7 731 Taylor St., Chelsea. x3

GARAGE SALE — June 24-25, 8 a.m. to 6 p.m. 1217 Kernwood Dr., Chelsea. Sewing machine, child's bike, clothes, misc. x3

GARAGE SALE — 40 years of accumulation, 12370 Dexter Rd. June 23-26, 9 to 5. x3

THREE-FAMILY GARAGE SALE June 26-27, 9 a.m. to 8 p.m. Children's clothes, toys and furniture, miscellaneous household items. 2626 S. Lima Center, Chelsea. x3

GARAGE SALE — 620 Flanders. Friday and Saturday, June 25 and 26, 9 to 5. Porch glider, bed, table and chairs, miscellaneous. x3

## WANTED STANDING TIMBER

Cash Paid In Advance  
Maple Rapids  
Lumber Mill, Inc.  
Ph. (517) 676-1329

## CLASSIFIED ADVERTISING RATES

Ad Rates:  
10 words or less \$1.00  
(when payment accompanies order)  
7¢ per word over 10

Card of Thanks & Memoriams  
50 words \$2.50  
(when payment accompanies order)  
7¢ per word over 50

Add \$1.00 per insertion if charged.

Deadline for ads in classified section is noon Saturday. Copy received between noon Saturday and noon Monday may appear under a separate heading on another page.

\$1.00 charge for tear-sheets and duplicate invoice on any ad under \$5.00

Any change or cancellation in advertising made after noon Saturday may not appear in that week's issue.

All advertisers should check their ad the first week. The Standard cannot accept responsibility for errors on ads received by telephone but will make every effort to make them appear correctly. Refunds may be made only when erroneous ad is cancelled after the first week that it appears.

Antiques 4c

THE OAKS ANTIQUES, 5041 Dexter-Pinckney Rd. 426-8106. Open Thurs. thru Sat., 12 to 5; Sunday, 1 to 5. x37H

ANTIQUES — Large assortment at the Early Time Shop, 9136 Dexter-Chelsea Rd. 426-3687. Open Thurs. thru Sat., 12 to 5. x16-13

## Real Estate 5

FRISINGER 475-8681

LAKE-FRONT QUALITY 1,470 sq. ft. year round ranch home on Clear Lake. Fireplace, family rm., 2-car garage. Beautifully landscaped. \$88,000 L/C.

NEW LISTING — 3-br. ranch home located just east of Chelsea on a private drive. Very nice condition. 2-car garage. L/C possible. \$59,900.

10 ACRES — Nice 4-bedroom 3-yr.-old colonial, family rm., fireplace, wood burner. Chelsea schools. Only \$78,500.

11% FINANCING 5% down on this 1-yr.-old 4-bedroom modern home located near North Lake. \$79,900.

NORTH LAKE BEAUTIFUL home and lot, 195' frontage, 3 bedroom, 1,800 sq. ft., stone fireplace, L/C \$95,500.

REALTORS

Herman Koenn 475-2613  
Bob Koch 426-4754  
Ray Knight 475-9230  
Paul Frisinger 475-8681 x1H

## NEW LISTINGS

CHELSEA — Executive estate, recently redecorated, new kitchen. Exceptionally private yet within the Village. Terms. \$149,900.

NICE RANCH HOME — 3 bedrooms, 2 baths, 2-car garage, completely air conditioned with a full basement, excellent condition. Terms. \$58,000.

A RETREAT YEAR ROUND — 13 acres of woods, shooting range, berry patches, garden area, trails, pole barn, plus a lovely contemporary home. Call for details.

CHELSEA RANCH — \$68,200. Terms. A lovely home in an excellent area, close to No. Elm. School, 3 bedrooms, 2 baths, new kitchen, family room and a 2-car garage.

SOMEONE IS MISSING an excellent buy at \$82,500. 4 bedrooms, 2 complete baths, 16'x32' inground pool, fruit trees, and much more. Located in the Inverness CC area. Terms.

WELL LOCATED FAMILY HOME In Chelsea — 4 bedrooms, aluminum siding, storms, woodburning stove, garage, garden area. Close to So. Elm. School and on a corner lot. Terms. \$59,900.

Eves:  
Norma Kern 475-8132  
Jeane Riemschneider 475-1469  
John Pierson 475-2064

Pierson & Riemschneider, Inc.

111 Park St.  
Chelsea, Michigan 48118  
475-9101 x1H

RANCH-TYPE HOME on Cavanaugh Lake. 1280 Ridge. Ph. 475-7495. x3

CASH FOR LAND CONTRACTS

Any type property — 1/4 acre or more — Call 475-2444

PAINTING, LAWN MAINTENANCE and other odd jobs.

Call 475-8005 or 475-8804 LOW RATES

10 ACRES — Beautiful home site, perked, 15 miles west of Ann Arbor, Chelsea schools, 2 miles from I-94. Ph. 663-6799 or 995-9638. x8H

Want Ad Classifications

Automotive 1  
Motorcycles 1a  
Farm & Garden 2  
Recreational Equipment 3  
For Sale (General) 4  
Auction 4a  
Garage Sales 4b  
Antiques 4c  
Real Estate 5

Animals, Pets 6  
Lost & Found 7  
Help Wanted 8a  
Situation Wanted 8b  
Babysitter 9  
Wanted To Rent 10a  
For Rent 11  
Misc. Notices 12  
Bus. Services 13  
Financial 14  
Bus. Opportunity 15  
Card of Thanks 16  
In Memoriam 17  
Legal Notices 18

Real Estate 5

Real Estate One 5

Real Estate 5

Real Estate 5

Real Estate 5

## Want Ad Classifications

Automotive 1  
Motorcycles 1a  
Farm & Garden 2  
Recreational Equipment 3  
For Sale (General) 4  
Auction 4a  
Garage Sales 4b  
Antiques 4c  
Real Estate 5

Animals, Pets 6  
Lost & Found 7  
Help Wanted 8a  
Situation Wanted 8b  
Babysitter 9  
Wanted To Rent 10a  
For Rent 11  
Misc. Notices 12  
Bus. Services 13  
Financial 14  
Bus. Opportunity 15  
Card of Thanks 16  
In Memoriam 17  
Legal Notices 18

Real Estate 5

Real Estate One 5

Real Estate 5

Real Estate 5

Real Estate 5

Real Estate 5

Real Estate 5

Real Estate 5

Real Estate 5

Real Estate 5

Real Estate 5

Real Estate 5

Real Estate 5

Real Estate 5

Real Estate 5

Real Estate 5

Real Estate 5

Real Estate 5

Real Estate 5

Real Estate 5

Real Estate 5

Real Estate 5

Real Estate 5

Real Estate 5

Real Estate 5

Real Estate 5

Real Estate 5

Real Estate 5

Real Estate 5

Real Estate 5

Real Estate 5

Real Estate 5

Real Estate 5

Real Estate 5

Real Estate 5

Real Estate 5

Real Estate 5

Real Estate 5

Real Estate 5

Real Estate 5

## Real Estate 5

### Real Estate One 5

995-1616

LOVELY old 4-bedroom home. Stone fireplace, original woodwork. 1 acre lot with in-ground swimming pool.

COZY 3-B



# LITTLE WANT ADS! BIG PLUSES FOR BIG RESULTS!

Washtenaw County's Busy Marketplace . . . Quick, Economical Results . . . Give 'em a try!

## For Rent 11

ROOMS by day, week or month. Excellent for the single man or retiree. Sylvan Hotel, Chelsea, Ph. 475-2911. x31f

FOR RENT — Fair Service Center for meetings, parties, wedding reception, etc. Weekdays or weekends. Contact John Wellnitz, phone 475-1518. x31f

CAR RENTAL by the day, week, end, week or month. Full insurance coverage, low rates. Call Lyle Christwell at Palmer Motor Sales. 475-1301. 25f

FOR RENT — Office or commercial space, 920 sq. ft. ready in about 4 weeks. Will customize. Main St., second floor in Chelsea. Front and rear parking. Ample parking. Call Jack Merkley, 475-8621. 12f

YEAR-ROUND RENTAL on beautiful Crooked Lake. Married couple only. References required. Ph. 475-2018. 475-8469. x43f

HOUSE IN DEXTER village — 4-bedroom, ideal for 3 or 4 career individuals or grad-students. No pets. \$400 per month plus damage deposit. 426-3660. x50f

3-BEDROOM PLUS house for rent. Family room, basement, etc. Dexter schools. \$425 per mo. Ph. 665-2639. x23-2

EFFICIENCY and sleeping rooms for rent in Chelsea. Utilities paid. Off-street parking. Ph. 475-9630. 23-2

HOUSE IN DEXTER village — 4-bedroom, ideal for 3 or 4 career individuals or grad-students. No pets. \$400 per month plus damage deposit. 426-3660. 50f

COTTAGE FOR RENT — Modern lakefront, wooded, quiet, two hours, N.W., good fishing, great bicycling area. \$150 a week, no pets. 1517-261-4466. 23-2

SMALL 3-BEDROOM HOUSE on Huron River near chain of lakes, stove, refrigerator, garage space, and boat lift. \$450 per month, \$600 security plus utilities. One year lease, ref. credit check required. x23-2

PORTAGE LAKE ACCESS with view of lake. Classy 3-bedroom with deck, \$525 a month. Gary, 662-6626. x23-2

AMERICAN LEGION HALL Rental — \$100-\$175. Ph. Tom Franklin, 475-2280 or 475-9949, evenings and week-ends. 44f

## SCHOOLHOUSE APARTMENTS

2-bedroom units for rent, 2 currently available. Ph. Mr. Edington or Mr. Bernard at 665-0616. x49f

## VILLAGE APARTMENTS

CUSTOM DESIGNED 2-BEDROOM APARTMENTS IN CHELSEA

★ Easy access to Ann Arbor, Jackson and Detroit  
★ Country atmosphere, State park within a 5-minute drive.  
★ Handicapped apartments available.  
★ Laundry facilities on site.  
★ Fenced-in play area for children.  
★ Private entranceways.

FOR MORE INFORMATION CALL 475-9253.

## EQUAL HOUSING OPPORTUNITY

FOR RENT — 2nd floor apartment. For married couples only. References required. Ph. 475-2018 or 475-8469. x49f

UNFURNISHED 4-room apartment. Heat and water provided. Ph. 475-1639. x3

SHARE HOUSE — Own room in country home. \$100 per month. Ph. 475-8921. x3

SMALL HOME for single or couple — Attractively remodeled and decorated. Village of Munith. 20 min. from Chelsea. \$225 mo. plus security deposit. x3

3-BEDROOM RANCH — 2 fireplaces, Dexter schools, Option possible. \$500. Chuck Walters, Realtor. 475-2882 or 475-2808. x3

2-BEDROOM APARTMENT in Chelsea Village. \$300 includes utilities. Chuck Walters, Realtor. 475-2882 or 475-2808. x3

1-BEDROOM — First-floor apartment. Garage. Basement. Gas furnace. \$280 per month. Ph. 475-2033. x3

CHELSEA — 1-bedroom apt. \$275 includes utilities. Ph. 475-8258. x3

2-BEDROOM APT. near Dexter. \$285 includes utilities. No lease. Ph. 426-4860. x3

AVAILABLE JULY 1 — 1-bedroom apt. in duplex, near Dexter. \$310 includes utilities. No lease. Ph. 426-4860. x3

## Misc. Notices 12

MANCHESTER FARMER'S MARKET — Flea Market 1982 Opening Saturday, July 10, 8 a.m. - 12 noon. Home-grown garden produce and flowers. Small reservations, Kevin, 428-7877 or 428-7197. x42

LOSE WEIGHT NOW — Ask me how. Phone Carolyn Bevan between 2 and 5 Monday thru Sat., 426-3233. x3

## Bus. Services 13

### General

### QUINTON UPHOLSTERY

Free estimates, pick-up and delivery. 16 years experience. 10% Senior Citizen discount. Special: 10% off fabric until Aug. 1. 2-year guarantee on workmanship. Call (517) 456-4850, 11530 Clinton-Tecumseh Rd., Clinton. 5-8

## DOUG'S

• INTERIOR • EXTERIOR  
• RESIDENTIAL • COMMERCIAL  
• BOOM TRUCK  
• WALLPAPER HANGING  
• COMPLETE PAINTING  
• SENIORS PRICES  
• QUALITY WORKMANSHIP

CALL 475-1196

940 MYSTER RD. CHELSEA

## Bus. Services 13

KIRBY SALES & SERVICE available in Chelsea, Ph. 475-2515. 31f

## NORMA JEAN SMITH SEWING & ALTERATIONS

18470 M-52  
Chelsea, MI 48118  
Ph. (313) 475-8984

PIANO TUNING and repair. Qualified technician. Call Ron Harris, 475-7134. x43f

SUMMER TUTORING — All elementary skills. Chelsea teacher. Helen Prohaska, 475-9342. x3-2

TUTORING — Grammar and writing. Chelsea High School teacher. Ph. 475-1601. x3-4

BRICK MASON — Brick and block work. Fireplaces, chimney repair. Tuck pointing and stone work. Dennis Garen, Ph. 475-2584. 48f

CARPENTRY WORK — Remodeling, siding, roofing, cement work, reasonable rates. Call Jim Hughes at 475-2079 or 475-2582. x14f

C—ustom Built Homes

O—h! We Remodel too

U—can count on us

N—o Job Too Small

T—rim Inside and Out

R—ough-In Only if

Y—ou want to Finish

S—iding Aluminum, 5' Gutters

I—mmediate Attention

D—ALE COOK & CO.

E—stimates, Free

BUILDERS

Please Call

475-9153

DALE COOK

## D. R. ANDARIESE Building & Remodeling

—ROUGH & TRIM SERVICE  
—KITCHENS REMODELED  
—BASEMENTS FINISHED  
—GARAGES  
—ADDITIONS

ALSO  
CUSTOM CABINETWORK  
AND WOOD TURNING

FREE ESTIMATES

Quality Work at Reasonable Rates

498-2297

J. R. CARRUTHERS

LICENSED  
RESIDENTIAL BUILDER  
CUSTOM HOMES  
ADDITIONS/FIREPLACES  
PATIOS  
ROOFING/SIDING/REPAIRS

475-7234

CHELSEA

30f

Norval R. Menge Builder

CUSTOM BUILT HOMES  
ADDITIONS  
REMODELING  
GARAGES AND POLE BARNS

We also do—  
LIGHT HAULING  
BACKHOE WORK  
GENERAL REPAIRS

all our work fully guaranteed

CALL FOR FREE ESTIMATES

475-1005

R. L. BAUER Builders

LICENSED AND INSURED  
Custom Building  
Houses — Garages  
Pole Barns  
Roofing — Siding  
Concrete Work  
FREE ESTIMATES

Call 475-1218

31f

Telephone your club news to 475-1371

## Bus. Services 13

### RON MONTANGE CONSTRUCTION

—Full carpentry services (rough and finish)  
—Additions, remodeling and repairs  
—Concrete  
—Roofing and siding  
—Cabinets and Formica work  
—Metal farm buildings  
—Grain storage bins  
—Excavating and trenching

QUALITY WORKMANSHIP  
FREE ESTIMATES

475-1080

19f

### VIRGIL CLARK CONSTRUCTION

New Construction - Remodeling  
Additions - Cement Work  
Pole Barns - Garages

INSURED - FREE ESTIMATES

Ph. 475-2191

Excavating

SAND GRAVEL

KLINK

EXCAVATING

Bulldozer — Backhoe  
Road Work — Basements  
Trucking — Crane Work  
Top Soil — Demolition  
Drainfield — Septic Tank  
Trenching, 5' up

Industrial, Residential, Commercial  
CALL 475-7631

13f

### LITTLE WACK EXCAVATING

Basement — Drainfields  
Bulldozing — Digging  
Snow Removal — Tree Removal

LICENSED AND INSURED

Paul Wackenhut

Ph. 428-8025

Landscaping/Outdoor Maint.

BLACK DIRT

Top Soil - Wood Chips  
Railroad Ties

WE DELIVER

C. L. Broderick & Son

475-2722 or 475-2796

x47f

### LANDSCAPING

Lawn Maintenance  
Complete Landscaping  
Sand - Gravel - Topsoil  
Sprinkler systems

GREENHILLS

LANDSCAPING

475-7637

x48f

### SNOW PLOWING

Lawn Maintenance

Building Maintenance

Small Landscaping

RICHARD SMITH

475-8984 after 5 p.m.

10f

### Repairs/Improvements

ALUMINUM & STEEL WELDING —  
Light repairs, light fabrication,  
Dale Richardson, 475-7462. x43f

### CHELSEA PLUMBING

NEW CONSTRUCTION  
REMODEL  
REPAIR  
WATER HEATER REPLACEMENT  
BOILER REPAIR & REPLACEMENT

475-1037

43f

### Experienced Handyman In All Fields

Carpentry - Plumbing - Engine Work  
Lawn Care.

Big or Small, I'll do it all!

GOOD - CHEAP - FAST

Call anytime,  
475-7395

## Bus. Services 13

### LET GEORGE DO IT! HOME REPAIR AND MAINTENANCE SERVICE

PHONE 475-8903

GEORGE ELLENWOOD  
563 McKinley St.  
Chelsea Mich.

PAINTING, interior and exterior.  
High quality, free estimates. Call  
Mike, 475-2033. x5-3

PATCHING and PLASTERING. Call  
475-7489. 33f

### Window Screens Repaired

Reasonable rates

### Chelsea Hardware

1105 S. Main Ph. 475-1121

30f

### Financial 14

PRIVATE PARTY. Purchasers land  
contracts and mortgages. Eves. only  
475-1469. x21f

### Card of Thanks 16

### CARD OF THANKS

We thank our three daughters, Mrs. Beulah Laudis, Mrs. Donna Lee and Maxine Corser, also the grandchildren for our 65th wedding anniversary and all the people who attended to make it a happy event.

Emery and Louine Pickell.

### THANK YOU

I would like to take this time to thank the Adult Community Education staff. If it wasn't for the fact that they offer non-grads a chance to graduate, I would have never graduated Thursday night, along with the other 28 people. Without this group of people in this community, it would of never of been possible to graduate! I would like to send my sincere thanks to Jackie Rogers (the director) for never giving up on me! Also, I would like to thank my family and friends in believing that I could do it. Thank you one and all. Sincerely,

Cathy Roy.

(A 1982 night-school graduate.)

### Historical Museums Are Open

Four of Michigan's seasonal historical museums are open for the 1982 season. Secretary of State Richard H. Austin announced today. A fifth, the Father Marquette Memorial Museum at St. Ignace, is not yet scheduled for opening.

The museums, located in Michigan State Parks in Delta, Keewenaw, Mackinac and Crawford counties, offer travelers and tourists a view of Michigan's past. They are administered by the Michigan Department of State in cooperation with the Michigan Department of Natural Resources.

Fort Wilkins Historic Complex in Fort Wilkins State Park at Copper Harbor. The story of 19th century military life, the history of Michigan's "copper country," and the tales of Lake Superior shipping come to life in this fort and lighthouse complex that dates back to 1844. Open from 8 a.m. to 8 p.m., seven days a week through the fall color season and admission is by Michigan state park motor vehicle permit.

Historic Fayette Townsite, Fayette State Park, on the Garden Peninsula off U.S. Highway 2 in Delta county. Nineteen historic structures remain from the village where the famed Jackson Iron Co. smelted Michigan iron ore from 1867 to 1891. A visitors' center, period room presentations, walking tours and modern exhibits tell the story of Fayette and its iron workers of 100 years ago. Open 8 a.m. to 8 p.m., seven days a week, until mid-October. Admission is by Michigan state park motor vehicle permit.

Hartwick Pines Lumbering Museum in Hartwick Pines State Park at Grayling presents the story of Michigan's "White Pine Era," through museum exhibits including a restored lumber camp. This year a new series of exhibits on logging and the people involved will greet visitors. Open 8 a.m. to 8 p.m. seven days a week through late fall. Admission is by Michigan state park motor vehicle permit.

Richard A. Havens

Grass Lake Youth Completes Marine Recruit Training

Marine Pvt. Richard A. Havens, son of William O. and Josephine Havens of 136 East Ave., Grass Lake, has completed recruit training at the Marine Corps Recruit Depot, San Diego, Calif.

During the 11-week training cycle, he learned the basics of battlefield survival. He was introduced to the typical daily routine that he will experience during his enlistment and studied the personal and professional standards traditionally exhibited by Marines.

He participated in an active physical conditioning program and gained proficiency in a variety of military skills, including first aid, rifle marksmanship and close order drill. Teamwork and self-discipline were emphasized throughout the training cycle.

A 1981 graduate of Grass Lake High school, he joined the Marine Corps in January 1982.

The Omnibus Budget Reconciliation Act of 1981 (P.L. 97-35) made changes in basic eligibility for Aid to Families with Dependent Children (AFDC) and exemption criteria for the Work Incentive (WIN) program and established three optional work experience programs, according to the 1981 annual report of the U.S. Department of Labor.

## Margaret O'Connor Seeking State Rep. Post

Republican Margaret O'Connor of Ann Arbor, has announced her candidacy for the Michigan State House of Representatives, 52nd district.

Mrs. O'Connor is a registered nurse, earning her bachelor of science degree from Creighton University, Omaha, Neb. She earned certified registered nurse anesthetist status at Western Reserve, Cleveland, O., and received a bachelor of science degree in political science and public administration from Eastern Michigan University.

Mrs. O'Connor has been employed as a registered nurse for 20 years and served eight years on the Lodi Township Board. She served as secretary for two years on the Lodi Township Planning Commission as well as serving two years on the Washtenaw County Planning Commission. For six years, she was a member of the Washtenaw County Board of Commissioners.

Mrs. O'Connor is married to Gerald A. O'Connor, M.D., and is a member of St. Francis of Assisi Catholic church.

As a Republican candidate, Mrs. O'Connor explains that "the state budget of \$2.7 billion in 1969 increased to \$10.1 billion by 1981—an increase of 274 percent during a period when inflation was a mere 125 percent." State employees increased 42,000 in 1969 to 63,700 in 1981—an increase of 52 percent after "severe cutbacks by the administration." Since inflation was not the major cause for state spending we know it was due to new programs, many of which were inappropriate activities for state government. A bloated bureaucracy has consumed more and more of your money. My record as a county commissioner shows clearly that I have consistently pushed for less taxes by reducing bureaucracy. I will accelerate this drive in Lansing where even larger amounts of money are wasted. The recent 22 percent state income tax increase clearly demonstrates the immediate need for increased government efficiency."

Richard A. Havens

Grass Lake Youth Completes Marine Recruit Training

Marine Pvt. Richard A. Havens, son of William O. and Josephine Havens of 136 East Ave., Grass Lake, has completed recruit training at the Marine Corps Recruit Depot, San Diego, Calif.

During the 11-week training cycle, he learned the basics of battlefield survival. He was introduced to the typical daily routine that he will experience during his enlistment and studied the personal and professional standards traditionally exhibited by Marines.

He participated in an active physical conditioning program and gained proficiency in a variety of military skills, including first aid, rifle marksmanship and close order drill. Teamwork and self-discipline were emphasized throughout the training cycle.

A 1981 graduate of Grass Lake High school, he joined the Marine Corps in January 1982.

The Omnibus Budget Reconciliation Act of 1981 (P.L. 97-35) made changes in basic eligibility for Aid to Families with Dependent Children (AFDC) and exemption criteria for the Work Incentive (WIN) program and established three optional work experience programs, according to the 1981 annual report of the U.S. Department of Labor.

## Number of Vets Will Decrease 40% In Next 50 Years

The number of living U.S. veterans will decrease by about 40 percent during the next 50 years, according to data released by the Veterans Administration.

The total veteran population, assuming no future U.S. involvement in armed conflict, will fall from the current level of 30 million to about 18.2 million by the year 2030.

Michigan is expected to have 818,600 veterans in 2030 and their average age will be 53.2. It now has 1,167,000 veterans.

The aged veteran population will grow dramatically during the next 20 years. Veterans 65 and older will increase from the present 3.2 million to nearly 9.2 million before the turn of the century.

The data is prepared by the VA to plan for future programs and benefits.



MARGARET O'CONNOR

## Two Awarded Scholarships to Blue Lakes Fine Arts Camp

Jennifer Boughton and Kim Collins, students at Beach Middle School, have been awarded scholarships to the Blue Lakes Fine Arts Camp for a two-week summer study program in band or orchestra.

At Blue Lake, students will participate in concentrated sectional and large group studies along with other outstanding musicians from throughout the state, country and other parts of the world.

Marshall Music annually gives more than 200 scholarships to students in Michigan schools serviced by the firm. Each scholarship is in the amount of \$147.50.

The scholarship is awarded by Marshall Music Co., to instrumental music students deemed most worthy based on musicianship, citizenship and musical achievement as determined by the school music staff and school administration.

Marshall Music annually gives more than 200 scholarships to students in Michigan schools serviced by the firm. Each scholarship is in the amount of \$











## DEATHS

### David John Haas

Ann Arbor  
(Formerly of Chelsea)

David John Haas of Ann Arbor, formerly of Chelsea, died suddenly Friday, June 18. He was 52.

He was born Feb. 20, 1930 in Chelsea, the son of Julius C. and Mildred G. Oker Haas. He had been a resident of both Chelsea and Ann Arbor.

Mr. Haas had been a member of Herbert J. McKune Post No. 31, American Legion.

He is survived by his mother, Mrs. Mildred Haas of Lansing; three sons, David of Oklahoma, Jeff of Laurenceville, Ga., and Tim of Chelsea; two daughters, Debra Torrice of Newark, Del. and Mary Haas of Chelsea; one brother, Julius Haas of Williamston; and two sisters, Katherine Lumbert of Holt and Betha Exley of Arizona.

Funeral services were held Monday, June 21 at 1 p.m. at the Burghardt-Cole Chelsea Funeral Chapel with the Rev. Marvin McCallum officiating.

### Edward J. Hennon

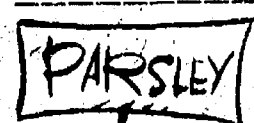
Davison  
(Formerly of Chelsea)

Edward J. Hennon of Davison, formerly of Chelsea, died Tuesday, June 15 at Lapeer County General Hospital. He was 91.

He was born in Hume, O., on April 17, 1891, the son of George and Elnora Jolly Hennon. Mr. Hennon was a retired employee of Federal Screw Works of Chelsea.

He was preceded in death by his wife, Josephine Johnson Hennon and a sister, Mrs. John (Sarah) Myers. Mr. Hennon is survived by four sisters, Maudie Nelson of Davison, Stella Wilson of Rochester, Jennie Hulberson of Crosswell and Ellen Woodruff of Flint; and several nieces and nephews.

Funeral services were held Thursday, June 17 at Mure Brothers Funeral Home in Lapeer with the Rev. Don Clark officiating. Interment followed in Oak Grove Cemetery, Chelsea.



Parsley ranks at the top of the vegetable list in vitamin A content.

## Births

A daughter, Katharine Ruth, Thursday, June 10, St. Joseph Mercy Hospital, Ann Arbor, to Dave and Karen Bird of 43500 Champlain Ct., Canton. Maternal grandparents are Mr. and Mrs. Charles Sullivan of Chelsea. Paternal grandparents are Mr. and Mrs. David Bird of Mt. Clemens. Maternal great-grandparents are Mr. and Mrs. Clair Barnum of Gregory. Paternal great-grandmother is Mrs. Ruth Bird of Arizona. Katharine has a brother, Andrew, age two.

A son, Lucas Russell, Friday, June 11, University Women's Hospital, Ann Arbor, to Jonathon and Bonnie Kanitz of Chelsea. Maternal grandmother is Mrs. Edward Wengren of Chelsea. Paternal grandparents are Russell and Doris Kanitz of Ann Arbor.

A son, James Thomas, Tuesday, May 25 to David and Carol Barah of Auburn, N. Y. Grandparents are Syl and Marilyn Wojicki of Chelsea.

A daughter, Valisa Lyn, Friday, June 18 to Dean and Colleen Thompson of 679 S. Lima Center Rd., Chelsea. Paternal grandparents are Don and Denise Thompson of Chelsea. Maternal grandparents are Robert and Norene Aello, also of Chelsea. Great-grandparents are Mr. and Mrs. Mac Packard of Chelsea, Ardi Collins of Stockbridge and Mr. and Mrs. Leo DesArmo of Munising. Great-great-grandmothers are Ruby Sanders and Irma Packard, both of Chelsea.

A daughter, Heather Lynn, Thursday, June 17, St. Joseph Mercy Hospital, Ann Arbor to Mark and Bonnie Giffin of Ann Arbor. Maternal grandparents are Mr. and Mrs. Guy Blackmon of Ann Arbor. Paternal grandparents are Mr. and Mrs. Jerry Giffin of Chelsea.

Tom and Linda Gardner of Rockport, Mass. announce the birth of a son, Scott Nesmith Gardner June 11, 1982 in Boston. Grandparents are Bob and Margery Cleverdon of Massachusetts and Russ and Joyce Gardner of Stanwood, Mich. The Gardner family are former residents of Chelsea.

Subscribe today to The Standard.



**SCHOLARSHIP CHECK PRESENTATION:** Jean Mann, chairman of the Chelsea Community Hospital Scholarship Committee, accepts a check from Madeline Vallier, an artist with the Chelsea Painters and a member of the

Scholarship Committee. Alice Thornton is also a member of the committee which presents a \$500 scholarship annually to a college-bound Chelsea High school graduate planning to study medicine.

## Applicants Sought for 1982 Palmer Medical Scholarship

Chelsea Painters designate a portion of the proceeds from the sale of paintings at the annual art show for the A. A. Palmer Memorial Scholarship. This \$500 scholarship fund was set up in 1972 as a memorial to the late Dr. A. A. Palmer by the original group of physicians at Chelsea Medical Center. For eight years it was administered by Dr. William Hawks and last year, Dr. Hawks requested that it be under the auspices of the Auxiliary Scholarship Committee.

Two \$500 scholarships were awarded in 1973 and 1974, and since that time one scholarship has been awarded each year for a total of \$5,500.

The A. A. Palmer scholarship is awarded to a Chelsea High school graduate who is pursuing a career in medicine, primarily family practice. It has been presented to 10 students who were enrolled in a pre-med curriculum. Last year it was awarded to Kimberly Brown, who was entering her first year at Wayne State University Medical School.

Determination of a recipient is based on academic achievement, extra curricular activities, and a motivation to pursue a career in medicine. To apply for the scholarship, interested persons should contact Jan Tupper at Chelsea Community Hospital, 475-1311, ext. 319, no later than July 2. Selection of a 1982 recipient will be made following interviews with the committee.

The first monies for the A. A. Palmer scholarship were raised by donations from local physicians and businessmen. Since 1973, the scholarship has been made possible by the Chelsea Painters, a group of approximately 18 artists who sell their works at an annual art fair held the first week-end in June at Chelsea Medical Center. Betty Maxwell of Ann Arbor is head of the group.

These artists began painting a number of years ago, using space in the basement of Dr. Hawks' former office at the

Medical Center and it was he who suggested that proceeds from the sale of paintings go toward the Palmer scholarship.

The Chelsea Community Hospital Auxiliary also awards two \$500 scholarships each year to students who are directly involved in health career programs. Selection of these recipients is based on academic achievement and sincere intent to further education in a health career. Applications were not taken for the scholarship this year as the committee elected to renew scholarships to the two recipients from 1981, Robin Fenton of Chelsea and Joan Schaible of Manchester, who are finishing requirements towards bachelor of science degrees in nursing.



Americans spend about \$400 million a year on razor blades.

## Fair Board Prepares Grounds for July 4th

Chelsea Fair Board held its regular meeting Thursday, June 17. The meeting was called to order by President Jerry Heydlauff. Other officers present were Maryann Guenther, secretary, Kay Poljan, treasurer, and Lloyd Grau, fair manager.

Directors present included Frank Renton, Archie Bradbury, Richard Bollinger, Harold Gross, Jerry Herrick, Jerry Holfka, Gary Houle, Mark Stapish, Earl Heller and Dick Poljan. Others present were Pat Merkel, coordinator of the American Legion, Commander Verne Salsburg and second vice-president Floyd Rinehart, and John Wellnitz.

Before the meeting, a work bee was held and the fence was put up for the Fourth of July. Jerry Heydlauff mowed the grass.

The minutes of the May 20 meeting were read and approved.

Among the sponsors of the Fourth of July celebration are the American Legion, Kiwanis Club and the Fair Board. Don Doll is in charge of the fireworks, Pat Merkel and Richard Bollinger will supervise the four wheel pull and Tom Franklin is in charge of the chicken barbecue. Verne Salsburg will run the ice cream social at 5 p.m. in the Fair Service Center.

There will be new paint on the Fair Service Center and the doors of the Merchant's Building. Harold Eisman, Wilbert Grieb and Mike Bareis are doing the work.

### Theatre Classes for Young Children Offered in Jackson

During July and August theatre classes for young people in grades 7-12 will be offered at Stone Village Theatre, 1701 Probert Rd., Jackson. There are two one-week sessions and one two-week session starting July 12 and ending Aug. 6.

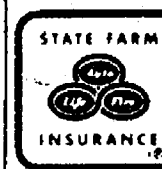
The classes will be taught by Ann Springer of Jackson, an alumna of Carnegie-Mellon University in Pittsburgh, Pa. Ms. Springer teaches acting and children's theatre at the Michigan School for the Arts at Jackson Community College.

Ms. Springer will also once again be teaching her two-week theatre class for grades 3-5 in mid-August through the Ella Sharp Museum's Art in the Park program. All classes have limited enrollment.

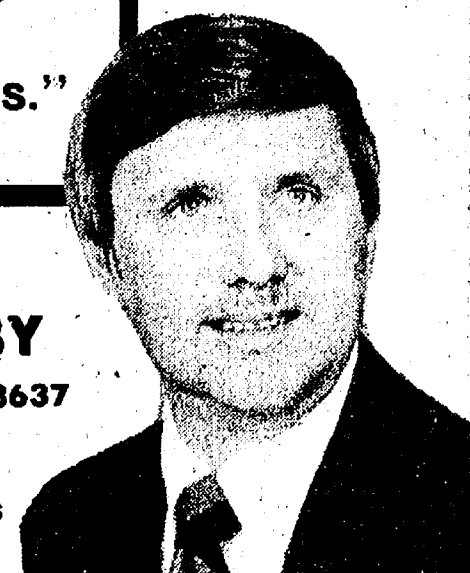
To receive a free brochure of for more information, call 787-6369 Monday, Wednesday, or Friday mornings.

**"I treat my policyholders like individuals, not numbers... each one has different insurance needs."**

**JERRY ASHBY**  
102 E. Middle 475-8637



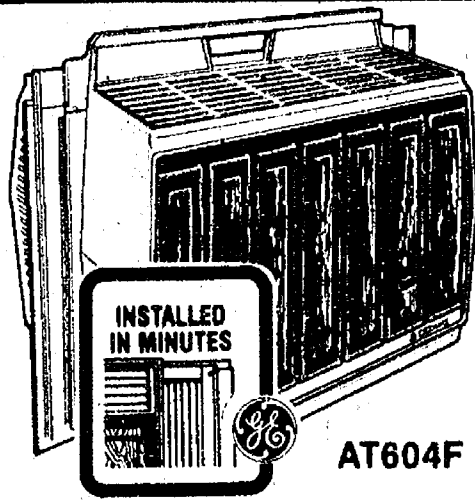
STATE FARM Insurance Companies  
Home Office: Bloomington, Illinois



Like a good neighbor, State Farm is there.

## WEATHER FORECAST: HOT & HUMID

### Keep Cool and Sleep Comfortably with a GE or Amana ROOM Air Conditioner



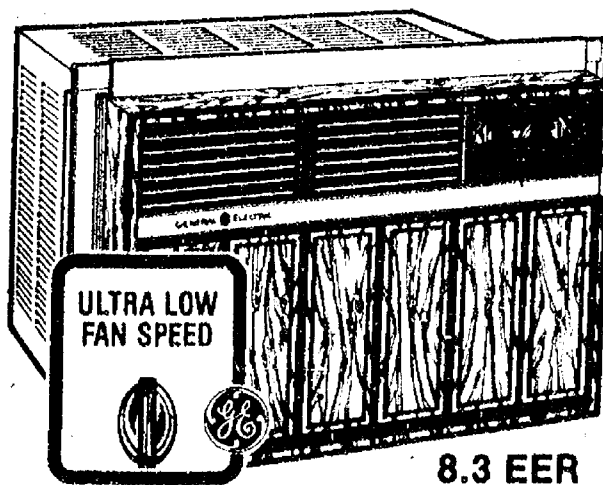
**4,000 BTU**  
GE CARRY-COOL®  
ROOM AIR CONDITIONER

- 115 Volts, 7.5 Amps
- 10 Position Thermostat
- 2 Fan/2 Cooling Speeds
- Save Energy Range

NOW ONLY

**\$209<sup>95</sup>**

### NEW! GE QUIETAIRE



**HI-EFFICIENCY**  
**8,000 BTU**  
QUIETAIRE  
ROOM AIR CONDITIONER

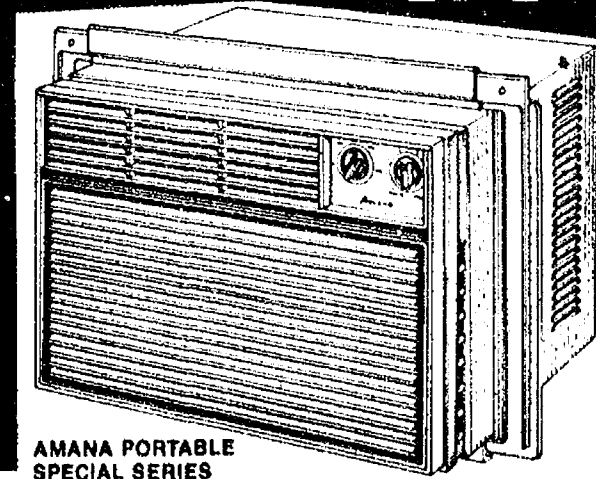
- 115 Volts, 8.5 Amps.
- 10 Position Thermostat
- Installs Quick 'n Easy
- Ultra Quiet

NOW ONLY

**\$419<sup>95</sup>**

**\$50<sup>00</sup> U.S. SAVINGS BOND\***  
\*From Amana on the purchase of this air conditioner.

**Amana**  
portable room air conditioners



Quiet operation and easy installation make Amana Portables ideal for bedroom, den and kitchen. LOOK AT THESE FEATURES: • Rugged, dependable compressor • Easy-to-use controls • Fast "Instant Mount" installation • Sturdy steel construction • Amana Electro-deposition paint fights rust • Quiet operation •

SALE

**\$299<sup>95</sup>**  
with \$50 U.S. Savings Bond

### WE STOCK FANS

- 20" Window Fans, 2 & 3 speed
- 12" Window Fans
- 12" Oscillating Fan, 3 speed

FROM  
**\$29<sup>95</sup>**

**HEYDLAUFF'S, INC.**  
113 N. MAIN ST., CHELSEA  
PHONE 475-1221

## Look for Martin-Senour's Two Gallon Bucket and...

# SAVE

### Exterior Flat Latex House Paint...



**in a Two Gallon Bucket**

- For Wood, Masonry and Metal
- Spreads Easily
- Soap and Water Clean-up
- Free of Lead Hazards
- One Coat Coverage, when applied according to directions
- Non-Yellowing
- Blister, Peel and Chalk Resistant

NOW **\$14<sup>99</sup>**

Sale Ends July 3rd

MARTIN  
SENOUR  
PAINTS

**GAMBLES**

110 N. Main, Chelsea Ph. 475-7472  
Open 8:30 to 5:30 Daily. Till 8:30 Fri.